

KN

**KENTUCKY
NATIONAL**

Hereford Show and Sale

February 28 – March 2, 2025

*Kentucky Fair and Exposition Center
New Market Hall, Louisville, Ky.*



DVAuction

Broadcasting Real-Time Auctions

Never Miss An Auction Again!

Watch & Bid online for FREE!

**Visit www.DVAuction.com
and Register Today!**

For General Questions Please Contact Our Office:
(402) 316-5460 or support@dvauction.com

2024 Kentucky Farm Bureau Beef Expo Schedule

BREED SHOWS

ANGUS — Friday, Feb. 28, 10:00 a.m.

GELBVIEH — Friday, Feb. 28, 1:00 p.m.

HEREFORD — Friday, Feb. 28, 1:00 p.m.

PEN HEIFER — Friday, Feb. 28, 2:00 p.m.

RED POLL — Friday, Feb. 28, 2:30 p.m.

SHORTHORN — Saturday, Mar. 1, 10:00 a.m.

SIMMENTAL — Friday, Feb. 28, 4:00 p.m.

BREED SALES

Saturday, Mar. 1, 12:00 p.m.

Saturday, Mar. 1, 11:30 a.m.

Saturday, Mar. 1, 1:00 p.m.

Saturday, Mar. 1, 2:00 p.m.

Saturday, Mar. 1, 9:30 a.m.

Saturday, Mar. 1, 1:00 p.m.

Saturday, Mar. 1, 11:00 a.m.

DON'T MISS THESE OTHER EXPO EVENTS!!!!

Junior Heifer, Steer, and Market Heifer Jackpot Shows

MAJOR CO-SPONSORS:

**Kentucky Farm Bureau and
the Kentucky Department of Agriculture,
Jonathan Shell, Commissioner**

Additional information: www.kybeefexpo.com

Hereford Show and Sale



67TH KENTUCKY NATIONAL 39TH KENTUCKY FARM BUREAU BEEF EXPO

Friday, February 28 / Show 1:00 p.m. / West Wing
Saturday, March 1 / Sale 1:00 p.m. / New Market Hall
Sunday, March 2 / Junior Heifer Show 8:00 a.m.

Contact: Suzanne Matheny 606-584-0577

Kentucky Fair and Exposition Center
West Wing, Louisville, KY
502-367-5472

Ask for Kentucky Beef Expo Hereford Representative

Co-Sponsored by:

Kentucky Farm Bureau
Kentucky Hereford Association
Kentucky Department of Agriculture,
Division of Shows and Fairs
www.kybeefexpo.com

Special Guests

Andy Beshear

Governor Commonwealth of Kentucky

Jonathan Shell

Commissioner of Agriculture
Commonwealth of Kentucky

Chris Caudill

Director of Shows and Fairs
Kentucky Department of Agriculture

John Chism

Beef Coordinator, Shows and Fairs
Kentucky Department of Agriculture

Jack Ward

Executive Vice President
American Hereford Association

Evan Davis

Kentucky Department of Agriculture

Lou Ellen Harr

Director, American Hereford Association

Emma Ballinger

Director, National Junior Hereford Association

Harlee Watson

Director, National Junior Hereford Association

Sale Staff

Dale Stith

Auctioneer
Cell 918-760-1550

Corbin Cowles

American Hereford Association
270-991-2534

Gene Steiner

Ringman
513-616-4086

Tommy Carper

Ringman
540-336-2737

Programs available at show

See inside back page for an all breeds schedule.

Motel Information

Holiday Inn Louisville Airport Fair and Expo Center

447 Farmington Ave.
Louisville, Kentucky 40209
Phone: 502-637-4500 Fax: 502-634-1900

Catalog by: HPI Creative Services

Directions to Kentucky Fair and Exposition Center

Located at the intersection of I-65 and the Waterson Expressway (I-264)

From the South, follow I-65 north to fairground signs

From the North, follow I-65 south to fairground signs

From the West, follow I-64 east to fairground signs

From the East, follow I-64 west or I-71 south to Waterson Expressway (I-264) to fairground signs

Dear Friends,

Welcome to the 38th Annual Kentucky Farm Bureau Beef Expo! As the largest beef cattle state east of the Mississippi River, Kentucky is blessed to have this event as a staple on our agriculture calendar each year.

Every year at the Beef Expo, Kentucky cattle producers show and sell some of the best cattle in the country to buyers looking to upgrade their genetics or take home a show project. This event is truly the place to be for the beef industry on the first weekend in March.

Over the years, we've seen ups and downs in the beef cattle market. But despite challenges, the industry is still in the top five for Kentucky agriculture, with the latest figures showing gross receipts from the production of cattle totaling \$1.1 billion.

Agriculture across Kentucky saw some unique challenges in 2023, but the cattle markets showed resilience with Kentucky's calves and feeders fetching much higher prices at the end of 2023 compared to 2022. Economists from the University of Kentucky anticipate agricultural receipts for 2023 could be \$8.1 billion, just shy of 2022's record-high \$8.3 billion.

These numbers show how important agriculture is to the state of Kentucky and cattle producers are a large reason for that. The nearly one million head of beef cattle in the Commonwealth and the more than 33,000 farms with beef cattle, solidifies cattle among one of Kentucky's top commodities.

As a cattle farmer myself, I know firsthand the hard work that goes into the beef industry from bottle-feeding calves to fighting the weather. It is that experience that forms my deep appreciation for the farmers across Kentucky who make this their passion year after year. Without their continued efforts Kentucky would not have the great agricultural community that makes it stand out amongst other states. Farming is the backbone of our state and cattle farmers are a large part of the equation.

Lastly, a lot of work goes into making this event possible every year. As always, I wish to thank Kentucky Venues CEO David Beck and his team for the many hours that went into hosting this event.

Again, welcome, and best wishes on an enjoyable and successful Kentucky Farm Bureau Beef Expo. If I or any of my staff can be of service to you, please don't hesitate to ask.

Sincerely,

Jonathan Shell
Commissioner of Agriculture
Commonwealth of Kentucky

Welcome to the 2025 Kentucky Farm Bureau Beef Expo

For many years, Kentucky's cattle industry has grown to the point that it is the eighth largest cattle producing state in the country and the largest east of the Mississippi which helps this sector of the agriculture industry to be a major economic driver for farm families across the state.

Working in conjunction with the Kentucky Department of Agriculture, the Kentucky Farm Bureau (KFB) Beef Expo continues to promote our cattle industry which now represents nearly 20 percent of the state's total farm cash receipts, according to 2024 projections.

This event helps to showcase the industry and is one of the premiere venues to buy, sell, and show some of the best livestock in the country.

The KFB Beef Expo has a rich history with its origins dating back to 1947 when it began as the Kentucky Angus Sweepstakes. Since then, many changes have taken place, but the purpose is still the same; to showcase the best cattle and highlight an industry so important to farm families across the state.

This year's Expo features six different breed associations and will feature a pen sale, as producers from multiple states make their way to the Kentucky Fair and Expo Center for the event.

Much of the success of our cattle sector is due to the dedication of our farm families and the work each breed association has made to move forward in production, and quality. The KFB Beef Expo is a great place to see the results of those continuing efforts.

I hope you have a successful Expo and a great year on the farm.

Sincerely,

Eddie Melton, President
Kentucky Farm Bureau





LOT 1 — KATYS LILY L612

1

KATYS LILY L612 {DBP}

COW — 44617111 — Calved: 6/12/24 — Tattoo: BE L612

NJW 79Z 22Z HEAVY DUTY 72C ET (DLF,HYF,REF,MSUDF,MDF,DBF)
BECKLEY 72C HEAVY DUTY 1031 (DLF,HYF,REF,MSUDF)
 44278069 C 95T 88X RIBEYE LADY 4204 ET (DLF,HYF,REF,MSUDF)

NJW 67U 28M BIG MAX 22Z (DLF,HYF,REF,MDF)
 BW 91H 100W RITA 79Z ET (DLF,HYF,REF,MSUDF,MDF)
 NJW 98S R117 RIBEYE 88X ET (SDD)(DLF,HYF,REF,MSUDF,MDF,DBF)
 RPH MAIDEN 95T (DLF,HYF,REF)

H MONTGOMERY 7437 ET (CHB)(DLF,HYF,REF,MSUDF,MDF,DBF)
HAF 7437 ELLA 1037 ET (DBP)
 44288261 HAF 1301 CHLOE 8023 (DLF,HYF,REF,MSUDF,MDF,DBF)

UPS SENSATION 2296 ET (SDD)(DLF,HYF,REF,MSUDF,MDF,DBF)
 RST GAT NST Y79D LADY 548 ET (DLF,HYF,REF,MSUDF,MDF,DBF)
 RF ENDURANCE T301 ET (DLF,HYF,REF)
 RF ADDIE 1022 (DLF,HYF,REF,MSUDF)

CE 5.6 (0.1); BW 2.9 (0.18); WW 55 (0.16); YW 87 (0.16); DMI 0.1 (0.06);
 SC 0.9 (0.14); SCF 17.7 (0.13); MM 34 (0.12); M&G 62; MCE 3.5 (0.13); MCW 85 (0.13);
 UDDR 1.10 (0.19); TEAT 1.00 (0.19); CW 67 (0.03); FAT 0.003 (0.03); REA 0.56 (0.03);
 MARB 0.03 (0.03); BMIS 375; BIIS 441; CHBS 112

- Were really excited to offer this heifer!
- If you like them big and stout with a tone of midde be sure to come by and see her, this heifer checks all the boxes. If you want one to show and make a cow, she will do just that.
- Consigned by: Lakeside Cattle — Brent Keith, 156 Westshore Dr., Campbellsville, KY | 270-250-3793



BECKLEY 72C HEAVY DUTY 1031 — SIRE OF LOTS 1-2

2

LUKES RAELEE

COW — P44597488 — Calved: 3/25/24 — Tattoo: BE L325

NJW 79Z 22Z HEAVY DUTY 72C ET (DLF,HYF,REF,MSUDF,MDF,DBF)
BECKLEY 72C HEAVY DUTY 1031 (DLF,HYF,REF,MSUDF)
 44278069 C 95T 88X RIBEYE LADY 4204 ET (DLF,HYF,REF,MSUDF)

NJW 67U 28M BIG MAX 22Z (DLF,HYF,REF,MDF)
 BW 91H 100W RITA 79Z ET (DLF,HYF,REF,MSUDF,MDF)
 NJW 98S R117 RIBEYE 88X ET (SDD)(DLF,HYF,REF,MSUDF,MDF,DBF)
 RPH MAIDEN 95T (DLF,HYF,REF)

THM MAVERICK 9140 ET (DLF,HYF,REF,MSUDF)
LSH KATIE'S LADY 907
 P44328721 K3 WW KATY DID 838

NJW 84B 10W JOURNEY 53D (DLF,HYF,REF,MSUDF,MDF,DBF)
 THM 755T DAHLIA 6105 ET (DLF,HYF,REF)
 BOYD WORLDWIDE 9050 ET (SDD)(DLF,HYF,REF,MSUDF,MDF,DBF)
 GRASSY RUN KATY 3141

CE 6.0 (0.1); BW 2.6 (0.28); WW 58 (0.18); YW 90 (0.18); DMI 0.1 (0.07);
 SC 1.1 (0.15); SCF 18.7 (0.13); MM 31 (0.12); M&G 60; MCE 1.4 (0.13); MCW 77 (0.13);
 UDDR 1.20 (0.18); TEAT 1.30 (0.18); CW 61 (0.03); FAT 0.003 (0.03); REA 0.39 (0.03);
 MARB 0.08 (0.03); BMIS 380; BIIS 454; CHBS 106

- This heifer is super sweet would make any junior a great heifer big bone big midde very attractive should make a great cow!
- Consigned by: Lakeside Cattle — Brent Keith, 156 Westshore Dr., Campbellsville, KY | 270-250-3793



BK RED RIVER H18 ET — SIRE OF LOT 3

3

LUKES RED RUBY L1023

COW — P44616934 — Calved: 3/7/24 — Tattoo: BE L1023

H THE PROFIT 8426 ET (DLF,HYF,REF,MSUDF,MDF,DBF)
BK RED RIVER H18 ET (DLF,HYF,REF,MSUDF,MDF,DBF)
 P44249335 HAPP KOOL AID POINTS 1218 ET (DLF,HYF,REF,MDF,DBF)

CHURCHILL PILGRIM 632D ET (SDD)(DLF,HYF,REF,MSUDF,MDF,DBF)
 RST GAT NST Y79D LADY 548 ET (DLF,HYF,REF,MSUDF,MDF,DBF)
 DELHAWK KAHUNA 1009 ET (DLF,HYF,REF)
 CRANESTYLE POINTS 945 (DLF,HYF,REF,DBP)

INNISFAIL WHR X651/723 4013 ET (CHB)(DLF,HYF,REF,MSUDF,MDF)
MC QUEEN 4013 2111 (DLF,HYF,REF,MSUDF)
 P44338365 BURKS 0598 MAUI QUEEN 413X ET (DLF,HYF,REF)

EFBEEF TFL U208 TESTED X651 ET (SDD)(CHB)(DLF,HYF,REF,MSUDF)
 INNISFAIL P230 T723 (DLF,HYF,REF,MSUDF)
 C MAUI JIM ET (DLF,REF)
 BURKS P606 QUEEN 0598 ET (DOD)(HYF)

CE 0.4 (0.17); BW 4.0 (0.33); WW 62 (0.24); YW 105 (0.24); DMI 0.4 (0.09);
 SC 1.1 (0.16); SCF 20.8 (0.16); MM 28 (0.12); M&G 59; MCE 0.4 (0.18); MCW 82 (0.17);
 UDDR 1.40 (0.22); TEAT 1.40 (0.23); CW 74 (0.03); FAT 0.032 (0.03); REA 0.60 (0.03);
 MARB 0.14 (0.03); BMIS 424; BIIS 506; CHBS 126

- Were really excited about these RED RIVERS i think this heifer is a awesome show prospect and will make a great cow
- Consigned by: Lakeside Cattle — Brent Keith, 156 Westshore Dr., Campbellsville, KY | 270-250-3793

4

CHF 81E STACEY 4034 {DLF,HYF,IEF,MSUDF,MDF,DBF}

COW — P44574599 — Calved: 3/2/24 — Tattoo: RE 4034

CHURCHILL SENSATION 028X {SOD}{DLF,HYF,IEF,MDF,DBF}
NJW 160B 028X HISTORIC 81E ET {DLF,HYF,IEF,MSUDF,MDF,DBF}
 P43829334 NJW 73S 38W DAYDREAM 160B {DLF,HYF,IEF,MSUDF}



BOYD POWER SURGE 9024 {DLF,HYF,IEF,MSUDF,MDF,DBF}
CHF 9024 STELLA 2018 ET
 P44463999 NJW 6W 80X STELLA 95Z {DLF,HYF,IEF,MSUDF}

UPS DOMINO 3027 {SOD}{CHB}{DLF,HYF,IEF,MSUDF,MDF}
 CHURCHILL LADY 7202T ET {DLF,HYF,IEF}
 NJW 76S P20 BEEF 38W ET {SOD}{DLF,HYF,IEF,MSUDF,MDF}
 NJW P606 72N DAYDREAM 73S {DLF,HYF,IEF,MSUDF,MDF}

BOYD 31Z BLUEPRINT 6153 {DLF,HYF,IEF,MSUDF,MDF,DBF}
 TH 329 358C LANA 76E {DLF,HYF,IEF,MSUDF,MDF,DBF}
 NJW 98S R117 RIBEYE BOX ET {DLF,HYF,IEF}
 NJW 146T KODI 6W {HYF}

CE 2.1 (0.4); BW 3.2 (0.48); WW 65 (0.43); YW 101 (0.42); DMI 0.2 (0.14);
 SC 0.6 (0.36); SCF 20.3 (0.32); MM 32 (0.28); M&G 64; MCE -4.4 (0.34); MCW 98 (0.34);
 UDDR 1.60 (0.43); TEAT 1.60 (0.42); CW 79 (0.10); FAT 0.043 (0.10); REA 0.98 (0.10);
 MARB -0.07 (0.10); BMIS 426; BIIS 495; CHBS 116

- Big time cow prospect here! Just check out the pedigree.
- With cows like Lana 76E, Stella 95Z, and Daydream 73S in her lineage, she should be a no miss cow.
- Stacy is deep bodied, dark red, and has cow power written all over her.
- Consigned by: *Cottage Hill Farm — David Taylor, 20 Cottage Hill Road, Petersburg, WV 26847 | 304-257-0263*



NJW 6W 80X STELLA 95Z — GRANDAM OF LOT 4

5

CHF D87 IMAGE 4080 ET

COW — P44620623 — Calved: 4/5/24 — Tattoo: RE 4080

UPS SENSATION 2296 ET {SOD}{DLF,HYF,IEF,MSUDF,MDF,DBF}
KLD RW MARKSMAN D87 ET {DLF,HYF,IEF,MSUDF,MDF,DBF}
 P43951713 RW MINDY 3078 6096 {DLF,HYF,IEF,MSUDF}

NJW 78P 88X COWBOSS 199B ET {DLF,HYF,IEF,MDF}
DCR 199B IMAGE 9306 {DLF,HYF,IEF,MSUDF,MDF,DBF}
 P44065955 DCR IMAGE 4057 {HYF,DBF}

CHURCHILL SENSATION 028X {SOD}{DLF,HYF,IEF,MSUDF,MDF,DBF}
 UPS JT MISS NEON 7811 ET {DLF,HYF,IEF,DBF}
 RW KW HUMMER K23 3078 {DLF,HYF,IEF}
 RW DEDE 23C 9145 {HYF}

NJW 98S R117 RIBEYE 88X ET {SOD}{DLF,HYF,IEF,MSUDF,MDF,DBF}
 NJW 8W LADYSPORT DEW 78P ET {DLF,HYF,IEF}
 TW HERCULES {DLF,HYF,IEF,DBF}
 DCR 713 IMAGE 2005 {HYF}

CE 1.5 (0.2); BW 3.9 (0.25); WW 50 (0.23); YW 86 (0.23); DMI -0.1 (0.08);
 SC 1.3 (0.19); SCF 17.4 (0.17); MM 26 (0.15); M&G 50; MCE -1.7 (0.18); MCW 77 (0.18);
 UDDR 1.30 (0.23); TEAT 1.30 (0.24); CW 64 (0.03); FAT 0.003 (0.03); REA 0.53 (0.03);
 MARB 0.02 (0.03); BMIS 368; BIIS 428; CHBS 113

- Here is a full sib to our 2024 Kentucky Beef Expo Reserve Champion Heifer.
- If you're looking for a heifer that can compete in the ring, we believe Image will do just that. This April born has that bone, hair, and neck extension that makes her easy to find.
- Consigned by: *Cottage Hill Farm — David Taylor, 20 Cottage Hill Road, Petersburg, WV 26847 | 304-257-0263*



LOT 5 — CHF D87 IMAGE 4080 ET

6

CHF 0100 DELIVERANCE 4026

BULL — P44620625 — Calved: 2/15/24 — Tattoo: RE 4026

NJW 160B 028X HISTORIC 81E ET {DLF,HYF,IEF,MSUDF,MDF,DBF}
BOYD 135U DELIVERANCE 0100 ET {DLF,HYF,IEF,MSUDF}
 P44132648 NJW 4037 34S DURANGO VACA 135U {DOD}{DLF,HYF,IEF,MSUDF}

BOYD POWER SURGE 9024 {DLF,HYF,IEF,MSUDF,MDF,DBF}
CHF 9024 STELLA 1045 ET
 P44417657 NJW 6W 80X STELLA 95Z {DLF,HYF,IEF,MSUDF}

CHURCHILL SENSATION 028X {SOD}{DLF,HYF,IEF,MSUDF,MDF,DBF}
 NJW 73S 38W DAYDREAM 160B {DLF,HYF,IEF,MSUDF}
 THM DURANGO 4037 {SOD}{DLF,HYF,IEF}
 NJW P606 80L DAYDREAM 34S ET {DLF,HYF,IEF}

BOYD 31Z BLUEPRINT 6153 {DLF,HYF,IEF,MSUDF,MDF,DBF}
 TH 329 358C LANA 76E {DLF,HYF,IEF,MSUDF,MDF,DBF}
 NJW 98S R117 RIBEYE BOX ET {DLF,HYF,IEF}
 NJW 146T KODI 6W {HYF}

CE 3.7 (0.2); BW 1.8 (0.27); WW 60 (0.20); YW 94 (0.20); DMI 0.3 (0.08);
 SC 0.9 (0.16); SCF 20.7 (0.15); MM 29 (0.14); M&G 59; MCE -0.5 (0.16); MCW 100 (0.15);
 UDDR 1.40 (0.20); TEAT 1.40 (0.20); CW 72 (0.03); FAT 0.023 (0.03); REA 0.66 (0.03);
 MARB 0.01 (0.03); BMIS 419; BIIS 491; CHBS 110

- Calving ease option here!
- If you're looking for a bull to add rib and muscle shape in your herd, this bull will do that.
- His dam has been extremely consistent and her calves are often feature lots in our sales.
- Consigned by: *Cottage Hill Farm — David Taylor, 20 Cottage Hill Road, Petersburg, WV 26847 | 304-257-0263*



LOT 6 — CHF 0100 DELIVERANCE 4026



SHF HOUSTON D287 H086 — SIRE OF LOT 7

7 CHF H086 HOUSTON 4202

BULL — P44620627 — Calved: 9/10/24 — Tattoo: RE 4202

SHF DAYBREAK Y02 D287 ET (CHB) (DLF,HYF,REF,MSUDF,MDF,DBF)
SHF HOUSTON D287 H086 (CHB) (DLF,HYF,REF,MSUDF,MDF,DBF)
 P44123641 SHF MISS 14 20Z D223 (DLF,HYF,REF,DBP)

SHF YORK 19H Y02 (S00) (CHB) (DLF,HYF,REF)
 SHF MISS M326 T08 ET (DLF,HYF,REF)
 LOEWEN 44X 6X 20Z (DBP)
 SHF RADAR R125 T75 (DLF,HYF,REF,DBP)

NJW 76S P20 BEEF 38W ET (S00) (DLF,HYF,REF,MSUDF,MDF)
CHF 38W MARGARET 9202
 P44317817 CHF TTF 4007 MARGARET 7008 (DLF,HYF,REF,MSUDF,MDF,DBF)

SHF PROGRESS P20 (S00) (DLF,HYF,REF,MDF,DBF)
 NJW 55N STARDUST 76S (DLF,HYF,REF,MSUDF,MDF)
 BOYD BEEF 17Y 4007 (DLF,HYF,REF)
 CHF CBT 8Y MARGARET 5004 (MDF)

CE 4.5 (0.2); BW 2.3 (0.24); WW 69 (0.24); YW 108 (0.24); DMI 0.3 (0.08);
 SC 1.4 (0.20); SCF 20.5 (0.18); MM 28 (0.19); M&G 63; MCE 2.7 (0.18); MCW 103 (0.17);
 UDDR 1.40 (0.25); TEAT 1.40 (0.25); CW 84 (0.03); FAT 0.023 (0.03); REA 0.65 (0.03);
 MARB 0.20 (0.03); BMIS 442; BIIS 535; CHBS 147

- We always like to bring a young, fall born herd bull prospect to this sale, and boy did we decide to bring a great one.
- This Houston son is extremely growthy, stout and sound footed.
- Consigned by: Cottage Hill Farm — David Taylor, 20 Cottage Hill Road, Petersburg, WV 26847 | 304-257-0263



NJW 202C 173D STEADFAST 156J ET — SIRE OF LOT 8

8 CHF 156J REBEKAH 4208

COW — P44620630 — Calved: 10/5/24 — Tattoo: RE 4208

NJW 79Z 2311 ENDURE 173D ET (S00) (CHB) (DLF,HYF,REF,MSUDF,MDF,DBF)
NJW 202C 173D STEADFAST 156J ET (CHB) (DLF,HYF,REF,MSUDF,MDF,DBF)
 P44276463 NJW 160Z 8Y HOME MAKER 202C (DLF,HYF,REF,MSUDF,MDF,DBF)

KCF BENNETT ENCORE Z311 ET (S00) (CHB) (DLF,HYF,REF,MSUDF,MDF,DBF)
 BW 91H 100W RITA 79Z ET (DLF,HYF,REF,MSUDF,MDF)
 NJW 73S W18 HOMEGROWN 8Y ET (S00) (DLF,HYF,REF,MSUDF,MDF,DBF)
 NJW 73S 88X DAYDREAM 160Z (S00) (DLF,HYF,REF,MSUDF,MDF)

NJW 133A 6589 MANIFEST 87G ET (DLF,HYF,REF,MSUDF,MDF,DBF)
CHF 87G REBEKAH 2004 ET
 P44525509 CHF 132E REBEKAH 9092 (DLF,HYF,REF,MSUDF,MDF,DBF)

/S MANDATE 66589 ET (DLF,HYF,REF,MSUDF,MDF,DBF)
 BW NJW 76S 8Y HOMESpun 133A (DLF,HYF,REF,MSUDF,MDF)
 NJW 76C 10W WHITMORE 132E (DLF,HYF,REF,MSUDF)
 CHF REBEKAH 240Z (DLF,HYF,REF,MSUDF,DBP)

CE 8.6 (0.2); BW 1.2 (0.23); WW 62 (0.22); YW 99 (0.21); DMI 0.4 (0.08);
 SC 1.6 (0.18); SCF 24.9 (0.17); MM 33 (0.16); M&G 64; MCE 3.7 (0.16); MCW 109 (0.17);
 UDDR 1.50 (0.21); TEAT 1.40 (0.21); CW 84 (0.03); FAT 0.043 (0.03); REA 0.64 (0.03);
 MARB 0.19 (0.03); BMIS 501; BIIS 590; CHBS 142

- We have been really excited about our Steadfast calves. They have the look we want in our show heifers and later on in our cows.
- Check out her impressive EPD profile.
- Consigned by: Cottage Hill Farm — David Taylor, 20 Cottage Hill Road, Petersburg, WV 26847 | 304-257-0263



INNISFAIL WHR X651/723 4013 ET
 — GRANDSIRE OF LOT 9

9 DF ROARIN RED {HYP,DBP}

BULL — P44615845 — Calved: 9/1/24 — Tattoo: RE DF/LE 2401

INNISFAIL WHR X651/723 4013 ET (CHB) (DLF,HYF,REF,MSUDF,MDF)
CHF TTF 4013 ARTHUR 0202 ET (DLF,HYF,REF,MSUDF,MDF)
 P44204131 NJW 6W 80X STELLA 95Z (DLF,HYF,REF,MSUDF)

EFBEEF TFL U208 TESTED X651 ET (S00) (CHB) (DLF,HYF,REF,MSUDF)
 INNISFAIL P230 T723 (DLF,HYF,REF,MSUDF)
 NJW 98S R117 RIBEYE 80X ET (DLF,HYF,REF)
 NJW 146T KODI 6W (HYP)

4D CAHILL D13D (DLF,HYF,REF,DBP)
DF LYNN (HYP,DBP)
 P44311646 DF DOLLY D01 (HYP,DBP)

PHH PCC 812 TRUE GRIT 002 (DLF,HYF,REF)
 LCC FBF CENTERFOLD 497 (DBP)
 BAR JZ TRADITIONS LEGEND 463S (DLF,HYF,REF)
 DF BRIGHT ROSE B01 (HYP,DBP)

NO EPDS AVAILABLE

- DF Roarin Red will make a great addition to your herd. He is the definition of a herd bull.
- He is a powerful and thick-made bull.
- Consigned by: Maggie Danko, 9488 North County Road 675 East, Shelburn, IN 47879 | 812-870-7413

10

DF RUBY {DBP}

COW — P44615851 — Calved: 9/9/24 — Tattoo: RE DF/LE 2402

INNISFAIL WHR X651/723 4013 ET (CHB)(DLF,HYF,IEF,MSUDF,MDF)
CHF TTF 4013 ARTHUR 0202 ET (DLF,HYF,IEF,MSUDF,MDF)
 P44204131 NJW 6W 80X STELLA 95Z (DLF,HYF,IEF,MSUDF)

EFBEEF TFL U208 TESTED X651 ET (SOD)(CHB)(DLF,HYF,IEF,MSUDF)
 INNISFAIL P230 T723 (DLF,HYF,IEF,MSUDF)
 NJW 98S R117 RIBEYE 80X ET (DLF,HYF,IEF)
 NJW 146T KODI 6W (HYF)

4D CAHILL D13D (DLF,HYF,IEF,DBP)

DF DELILAH (DBP)

P44311644

DF DARLENE D06

PHH PCC 812 TRUE GRIT 002 (DLF,HYF,IEF)
 LCC FBF CENTERFOLD 497 (DBP)
 DF PALE FACE (DLF,HYF,IEF)
 IWF CHI CHANG 120X (DLF,HYF,IEF)

NO EPDS AVAILABLE

- This heifer is bred for both the show ring and pasture.
- She is a stunning calf and is ready to be part of your program.
- *Consigned by: Maggie Danko, 9488 North County Road 675, East Shelburn, IN 47879 | 812-870-7413*



INNISFAIL WHR X651/723 4013 ET
 — GRANDSIRE OF LOT 10

11

GKH 42J LADY'S FIRST 2400 {DLF,HYF,IEF,MSUDF,MDF,DBF}

BULL — P44552084 — Calved: 1/20/24 — Tattoo: RE GKH/LE 2400

NJW 160B 028X HISTORIC 81E ET (DLF,HYF,IEF,MSUDF,MDF,DBF)
CLC 81E HISTORIC 759E 42J (DLF,HYF,IEF,MSUDF)
 P44343667 WALKER FLAVA Y52 B8 759E (DLF,HYF,IEF,MSUDF)

CHURCHILL SENSATION 028X (SOD)(DLF,HYF,IEF,MSUDF,DBF)
 NJW 73S 38W DAYDREAM 160B (DLF,HYF,IEF,MSUDF)
 SHF YANKEE R117 Y52 ET (SOD)(CHB)(DLF,HYF,IEF)
 LPH FLAVA 105T B8 (HYF)



JDH AH MILES AHEAD 35F ET (CHB)(DLF,HYF,IEF,MSUDF)

HPH 35F MACEE 2127 (DBP)

P44345802

NS 028X LADY 417 (DLF,HYF,IEF,MSUDF,DBP)

C DOUBLE YOUR MILES 6077 ET (DLF,HYF,IEF,MSUDF)
 JDH AH MS 34X VICTOR 33245C ET (DLF,HYF,IEF,MSUDF)
 CHURCHILL SENSATION 028X (SOD)(DLF,HYF,IEF,MSUDF,DBF)
 NS 4R RACHAEL 221 (DLF,HYF,IEF,MSUDF,DBP)

CE 7.3 (0.27); **BW** 1.0 (0.45); **WW** 63 (0.38); **YW** 101 (0.37); **DMI** 0.2 (0.13);
SC 1.1 (0.29); **SCF** 17.4 (0.26); **MM** 38 (0.18); **M&G** 69; **MCE** 2.8 (0.28); **MCW** 91 (0.28);
UDDR 1.30 (0.35); **TEAT** 1.30 (0.35); **CW** 74 (0.10); **FAT** 0.032 (0.10); **REA** 0.69 (0.10);
MARB 0.17 (0.10); **BMS** 389; **BIIS** 471; **CHBS** 135

- Lady's First has been at the top of our charts since the day he was born. He truly is the cowman's kind. Being relaxed in his build while still being moderate framed and athletic on the move, big square hip and tremendously eye appealing from the side.
- An intriguing herd sire prospect that combines incredible phenotype and impressive numerical package with renowned bloodlines.
- His sire was part of Chapman Land & Cattle Pen of Bulls at Cattlemen's Congress in 2023 and his dam, HPH 35F Macee 2127, was the Grand Champion Female at the 2022 Ohio State Fair.
- *Consigned by: Helsing Polled Herefords, 6518 Farmersville Pike, Germantown, OH 45327 | 937-751-9841*



LOT 11 — GKH 42J LADY'S FIRST 2400

12

LLH 018J PENELOPE 2309 {DBP}

COW — P44495365 — Calved: 3/9/23 — Tattoo: RE LLH/LE 2309

KCF BENNETT HOMEWARD C776 (CHB)(DLF,HYF,IEF,MSUDF,MDF,DBF)
NS JOURNEY 018J ET (DLF,HYF,IEF,MSUDF,MDF,DBF)
 P44493226 NS 4R RACHAEL 221 (DLF,HYF,IEF,MSUDF,DBP)

NJW 73S W18 HOMETOWN 10Y ET (SOD)(CHB)(DLF,HYF,IEF,MSUDF,MDF)
 KCF MISS 22S Z301 ET (DLF,HYF,IEF,DBP)
 MSU TCF REVOLUTION 4R (SOD)(DLF,HYF,IEF,MDF,DBF)
 NS 492 MARTHA 678 (DLF,HYF,IEF)

UPS SENSATION 2296 ET (SOD)(DLF,HYF,IEF,MSUDF,MDF,DBF)

DELHAWK FELICITY 9F ET (DBP)

43931867

DELHAWK WHISPER 1012 ET (DLF,HYF,IEF)

CHURCHILL SENSATION 028X (SOD)(DLF,HYF,IEF,MSUDF,DBF)
 UPS JT MISS NEON 7811 ET (DLF,HYF,IEF,DBP)
 TH JWR SOP 166 576 TUNDRA 63N (SOD)(DLF,HYF,IEF)
 MCR PPF MISS GOLD DOM 206 ET (DLF,HYF,IEF)

CE -1.5 (0.2); **BW** 4.2 (0.31); **WW** 64 (0.24); **YW** 107 (0.22); **DMI** 0.2 (0.08);
SC 0.8 (0.16); **SCF** 12.9 (0.15); **MM** 29 (0.16); **M&G** 61; **MCE** -2.6 (0.15); **MCW** 116 (0.14);
UDDR 1.30 (0.21); **TEAT** 1.20 (0.21); **CW** 76 (0.03); **FAT** 0.033 (0.03); **REA** 0.60 (0.03);
MARB 0.18 (0.03); **BMS** 322; **BIIS** 404; **CHBS** 135

- This bred heifer has all the parts and pieces anyone can find attractive. No matter if you are looking for a heifer to make show calves or one that will be a tremendous cow out on pasture, she is the one.
- With the extra eye appeal everyone admires, to being moderate framed. She will be one who will make returns on your investment.
- Checked safe, due in early April to CLC 81E Historic 759E 42J, our walking herd sire.
- *Consigned by: Helsing Polled Herefords, 6518 Farmersville Pike, Germantown, OH 45327 | 937-751-9841*



LOT 12 — LLH 018J PENELOPE 2309



BOYD 76E FORECAST 0050 — SIRE OF LOT 13

13 JM STORM L33 {DLF,HYF,IEF,MSUDF,MDF,DBF}

BULL — P44527064 — Calved: 9/3/23 — Tattoo: LE L33

NJW 84B 4040 FORTIFIED 238F {DLF,HYF,IEF,MSUDF,MDF,DBF} BOYD FT KNOX 17Y XZ5 4040 {DLF,HYF,IEF,MSUDF,MDF,DBF}
BOYD 76E FORECAST 0050 {DLF,HYF,IEF,MSUDF,MDF,DBF} NJW 16S 100W JOEY 84B ET {DLF,HYF,IEF,MSUDF,MDF,DBF}
P44132532 TH 329 358C LANA 76E {DLF,HYF,IEF,MSUDF,MDF,DBF} TH 403A 475Z PIONEER 358C ET {S00}{DLF,HYF,IEF,MSUDF,MDF,DBF}
BOYD 31Z BLUEPRINT 6153 {DLF,HYF,IEF,MSUDF,MDF,DBF} R LEADER 6964 {S00}{DLF,HYF,IEF,MSUDF,MDF,DBF}
BW MISS BLUEPRINT 546 {HYP,DBP} NJW 91H 100W RITA 31Z ET {DLF,HYF,IEF,MSUDF,MDF,DBF}
P44104633 CHF EVELYN 4302 43E {HYP,DBP} BOYD BEEF 17Y 4302 ET {DLF,HYF,IEF,MSUDF,MDF,DBF}
CHF COURTNEY X69 15C {HYP,DBP}

CE 8.1 (0.2); **BW** 1.7 (0.23); **WW** 61 (0.21); **YW** 93 (0.21); **DMI** 0.4 (0.08);
SC 1.5 (0.17); **SCF** 17.4 (0.16); **MM** 25 (0.15); **M&G** 56; **MCE** 2.0 (0.16); **MCW** 73 (0.16);
UDDR 1.30 (0.19); **TEAT** 1.40 (0.20); **CW** 69 (0.03); **FAT** 0.033 (0.03); **REA** 0.42 (0.03);
MARB 0.00 (0.03); **BMI** 353; **BI** 425; **CHB** 99

- Storm is a bull that we think can leave a mark on either a purebred herd or commercial herd. With having Blueprint on his bottom side and Forecast on his top side he should leave a nice set of replacement heifers.
- He is pigmented, square built, and packed full of red meat. Given his birth weight and calving ease numbers we think he could work for heifers and cows.
- Scurred.
- Consigned by: Martin Farms, 12660 Fisher Rd., California, KY 41007 | 859-801-3288



JLCS 15G UNDERGROUND K10 — SIRE OF LOT 14

14 JM LAYLA M9 {HYP,DBP}

COW — P44621791 — Calved: 5/10/24 — Tattoo: LE M9

APH 4356 COLORADO 15G {DLF,HYF,IEF,MSUDF,MDF,DBF} R EXCITEMENT 4356 {CHB}{DLF,HYF,IEF,MSUDF,MDF,DBF}
JLCS 15G UNDERGROUND K10 {DLF,HYF,IEF,MSUDF,MDF,DBF} CPH 10Y WYNNE 14B {DLF,HYF,IEF,MSUDF,MDF,DBF}
P44336600 WALKER LADY 722 D102 928G {DLF,HYF,IEF,MSUDF,MDF,DBF} F FINAL TEST 722 {CHB}{DLF,HYF,IEF,MSUDF,MDF,DBF}
HH NEW DAY 3098 {DLF,HYF,IEF,MSUDF,MDF,DBF} WALKER LADY 4248 140 D102 ET {DLF,HYF,IEF,MSUDF,MDF,DBF}
JM LAYLA M9 {HYP,DBP} DJF 196T 929 YARDLY 1014 {DLF,HYF,IEF,MSUDF,MDF,DBF}
P44237187 WOLF COUNTRY ROSE 824 A26 {HYP,DBP} BECKLEY 719T WHITNEY 1041 {DLF,HYF,IEF,MSUDF,MDF,DBF}
H W4 PURE COUNTRY 0109 {S00}{DLF,HYF,IEF,MSUDF,MDF,DBF}
TATE ROSE 824 {HYP,DBP}

CE 0.6 (0.1); **BW** 3.5 (0.15); **WW** 58 (0.14); **YW** 89 (0.13); **DMI** 0.5 (0.05);
SC 0.9 (0.10); **SCF** 17.7 (0.09); **MM** 25 (0.09); **M&G** 54; **MCE** -1.0 (0.09); **MCW** 98 (0.10);
UDDR 1.30 (0.14); **TEAT** 1.30 (0.14); **CW** 74 (0.03); **FAT** 0.003 (0.03); **REA** 0.54 (0.03);
MARB 0.17 (0.03); **BMI** 378; **BI** 456; **CHB** 123

- Layla is a heifer we've been excited to consign to the Beef Expo all fall.
- She's one that can catch your eye very easily. She's big middle, wide topped and is smooth moving.
- With her just being a May heifer she should show well in the summer yearling division.
- Consigned by: Martin Farms, 12660 Fisher Rd., California, KY 41007 | 859-801-3288



DCF 6018 BELLE HEIR J41 ET — SIRE OF LOT 15

15 HWW WCW MARISOL 10M

COW — 44627069 — Calved: 8/15/24 — Tattoo: BE 10M

C CJC BELLE HEIR ET {CHB}{DLF,HYF,IEF,MSUDF,MDF,DBF} BR BELLE AIR 6011 {CHB}{DLF,HYF,IEF,MSUDF,MDF,DBF}
DCF 6018 BELLE HEIR J41 ET {DLF,HYF,IEF,MSUDF,MDF,DBF} C CJC 89T MISS MILES 4264 ET {DLF,HYF,IEF,MSUDF,MDF,DBF}
44330238 C 1311 5280 LADY 6018 ET {DLF,HYF,IEF,MSUDF,MDF,DBF} CRR 5280 {DLF,HYF,IEF,MSUDF,MDF,DBF}
C 88X NOTICE ME 1311 ET {DLF,HYF,IEF,MSUDF,MDF,DBF}
T/R BPF AMERICAN CLASSIC 561C ET {DLF,HYF,IEF,MSUDF,MDF,DBF} ECR WHO MAKER 210 ET {DLF,HYF,IEF,MSUDF,MDF,DBF}
BACC 4276 MILES CANDY 107 {DLF,HYF,IEF,MSUDF,MDF,DBF} TFR PARIS 415 ET
44281998 SULL MILES CANDY 4276 {DLF,HYF,IEF,MSUDF,MDF,DBF} C MILES MCKEE 2103 ET {S00}{DLF,HYF,IEF,MSUDF,MDF,DBF}
C EYE CANDY 2079 {DLF,HYF,IEF,MSUDF,MDF,DBF}

NO EPDS AVAILABLE

- Marisol is an eye-catching show heifer prospect with a lot of natural depth.
- She has a star-studded pedigree that includes BR Belle AIR 6011, T/R BPF American Classic 561C ET, and SULL Miles Candy 4276.
- With JNHE being in Louisville in 2025 make sure you check her out.
- Consigned by: Harlee Watson, 6196 Mt. Sterling Road, Flemingsburg, KY 41041 | 606-748-1600

16

MCS ROSIE 324

COW — P44622807 — Calved: 10/10/24 — Tattoo: BE 324

UPS SENSATION 2296 ET (S00)(DLF,HYF,JEF,MSUDF,MDF,DBF)
KLD RW MARKSMAN D87 ET (DLF,HYF,JEF,MSUDF,MDF,DBF)
 P43951713 RW MINDY 3078 6096 (DLF,HYF,JEF,MSUDF)

CHURCHILL SENSATION 028X (S00)(DLF,HYF,JEF,MSUDF,MDF,DBF)
 UPS JT MISS NEON 7811 ET (DLF,HYF,JEF,DBF)
 RW KW HUMMER K23 3078 (DLF,HYF,JEF)
 RW DEDE 23C 9145 (HYF)

CHURCHILL SENSATION 028X (S00)(DLF,HYF,JEF,MSUDF,MDF,DBF)
MCS MISS LONDON
 P44039400 DELHAWK HANNA 50E (DLF,HYF,JEF,MSUDF)

UPS DOMINO 3027 (S00)(CHB)(DLF,HYF,JEF,MSUDF,MDF)
 CHURCHILL LADY 7202 ET (DLF,HYF,JEF)
 R LEADER 6964 (S00)(DLF,HYF,JEF,MSUDF,DBF)
 KJ BJ 319X TIFFANY 382C ET

CE 0.8 (P); BW 3.5 (P); WW 57 (P); YW 92 (P); DMI 0.0 (P);
 SC 1.3 (P); SCF 21.7 (P); MM 34 (P); M&G 63; MCE -1.8 (P); MCW 81 (P);
 UDDR 1.25 (P); TEAT 1.35 (P); CW 62 (P); FAT 0.033 (P); REA 0.49 (P);
 MARB 0.03 (P); BMIS 425; BHS 497; CHBS 103

- A really solid fall heifer calf here for someone who wants to show but more importantly have a great cow to build their herd from.
- London is a daughter of our matriarch donor, Hanna, that has made a ton of great ones for us. Everyone knows how hot the Marksmen cattle have been, and this one is perfect example of why they are sought after.
- Consigned by: Mary Carter Shirley, 2786 Roberts Matthews Hwy., Sparta, TN 38583 | 931-273-4392



MCS MISS LONDON 901 — DAM OF LOT 16

17

MCS QUEEN OF HEARTS 325 ET {MDF,DBF}

COW — P44622798 — Calved: 10/29/24 — Tattoo: BE 325

STAR TCF LOCK-N-LOAD 300W ET (CHB)(DLF,HYF,JEF,DBF)
TFR KU ROLL THE DICE 1326 (DLF,HYF,JEF,MSUDF,MDF,DBF)
 43477667 LH LANGFORD LADY 0253 ET (DLF,HYF,JEF)

LAGRAND RELOAD 80P ET (S00)(CHB)(DLF,HYF,JEF)
 STAR TCF ADV ORALEE 173P ET (DLF,HYF,JEF,DBF)
 THM DURANGO 4037 (S00)(DLF,HYF,JEF)
 LP6 59K INDEPENDENCE LASS 22N

YB BA X06 860 ET (DLF,HYF,JEF,MSUDF,DBF)
YB EMMA 860 030 (DLF,HYF,JEF,MSUDF,MDF,DBF)
 P44234294 YB MS RAMBO 670 813 (HYF,MDF,DBF)

LSW WCC ABOUT TIME X06 (DLF,HYF,JEF)
 CFCC EVAN MAY 1053A (DLF,HYF,JEF,DBF)
 PURPLE KPH HOMESKILLER 67D ET (DLF,HYF,JEF,MDF,DBF)
 YB MS RAMBO 10M 1129 (HYF)

CE -4.2 (P); BW 5.2 (P); WW 69 (P); YW 112 (P); DMI 0.4 (P);
 SC 0.8 (P); SCF 13.0 (P); MM 25 (P); M&G 60; MCE -3.9 (P); MCW 129 (P);
 UDDR 1.15 (P); TEAT 1.10 (P); CW 93 (P); FAT 0.003 (P); REA 0.75 (P);
 MARB 0.07 (P); BMIS 336; BHS 414; CHBS 145

- This is your best chance to get in on the ground floor of our upcoming donor, Poker Face, who MC campaigned to plenty of wins a couple years ago.
- Her first calf is the bull MC showed this past year winning his division at Junior Nationals and Louisville.
- We thought enough of that first calf to flush her right away and these Roll The Dice's are absolutely legit. Only problem is we can't keep them all, and that's where you get all the benefit.
- Consigned by: Mary Carter Shirley, 2786 Roberts Matthews Hwy., Sparta, TN 38583 | 931-273-4392



YB EMMA 860 030 — DAM OF LOT 17

18

NBH LADY RED {DLF,HYF,JEF,MSUDF,MDF,DBF}

COW — P44608247 — Calved: 5/18/24 — Tattoo: RE NB28

BOYD 5301 ENGINEER 8126 (DLF,HYF,JEF,MSUDF,MDF,DBF)
NB SIR RICHARD (DLF,HYF,JEF,MSUDF)
 44229313 HH BURGUNDY 8044

BOYD 31Z BLUEPRINT 6153 (DLF,HYF,JEF,MSUDF,MDF,DBF)
 BOYD X54 MS ADVANCE 5301 ET (DLF,HYF,JEF,MSUDF)
 H L1 DOMINO 3053 ET (S00)(DLF,HYF,JEF)
 DELHAWK BISTRO 5D ET



WALKER ADVENTURE X51 9047 315 (DLF,HYF,JEF)
BW CLASSY LADY 315 33C (HYF)
 P43598915 BJB CLASSY LADY (HYF)

KCF BENNETT REVOLUTION X51 (S00)(CHB)(DLF,HYF,JEF,MSUDF,MDF,DBF)
 GRANDVIEW CMR MISS GARRETT 9047
 BDF VICTOR 243 7841
 BJB LOU ANN 8343 (HYF)

CE 1.0 (0.2); BW 3.1 (0.38); WW 59 (0.34); YW 92 (0.33); DMI -0.1 (0.12);
 SC 0.7 (0.27); SCF 19.7 (0.25); MM 26 (0.18); M&G 56; MCE -0.2 (0.25); MCW 92 (0.25);
 UDDR 1.30 (0.33); TEAT 1.30 (0.34); CW 78 (0.10); FAT 0.053 (0.10); REA 0.43 (0.10);
 MARB 0.23 (0.10); BMIS 423; BHS 510; CHBS 141

- Nice heifer for a junior.
- Out of one of our best cows.
- Nice form, wide hips.
- Consigned by: Dr. Maurice Nida, 2614 Third Ave. East, Big Stone Gap, VA 24219 | 276-393-3206

BOYD 5301 ENGINEER 8126
— GREAT GRANDSIRE OF LOT 18



TAN WSF HCC 106G 47N BOLD 742T ET
— SIRE OF LOT 19

19 JC BOLD MARLENE 33M {HYF}

COW — P44612965 — Calved: 9/10/24 — Tattoo: RE JC/LE 33M

NJW MC WSF TRAIL BOSS 47N ET
TANWSFHCC 106G 47N BOLD 742T ET {DLF,HYF,REF}
P42845053 LLL LADY PACER 07C 106G {HYF}

REMITALL EMBRACER 8E {SOD}{HYF}
SADDLE VLY LADYSPORT 120
MM PACEMAKER 073 {SOD}{HYF}
LLL MISS REDEYE 29X 07C {HYF}

SHF RIB EYE M326 R117 {SOD}{CHB}{DLF,HYF,REF}
MISS MARLENE 33E {HYF}
P43952893 31C MARLENE 755T {HYF}

KCF BENNETT 3008 M326 {SOD}{CHB}{DLF,HYF,REF,MDF,DBF}
HVH MISS HUDSON 83K 8M {HYF}
TH 2237H VICTOR 755T {SOD}{DLF,HYF,REF,MSUDF,MDF}
BHF MISS VIRDEENA 31X {HYF}

CE 7.7 (0.2); **BW** 2.0 (0.32); **WW** 43 (0.22); **YW** 69 (0.21); **DMI** -0.4 (0.08);
SC 0.8 (0.16); **SCF** 14.3 (0.16); **MM** 21 (0.14); **M&G** 42; **MCE** 1.5 (0.15); **MCW** 78 (0.15);
UDDR 1.20 (0.23); **TEAT** 1.30 (0.23); **CW** 63 (0.03); **FAT** -0.007 (0.03); **REA** 0.46 (0.03);
MARB 0.08 (0.03); **BMI\$** 329; **BIIS** 384; **CHBS** 121

- This is a daughter of TAN WSF HCC 106G 47N Bold 742T ET that we bought from Wooden Shoe Farm.
- He has been the best producer of females that we have ever used here @jc cattle co! We know she could become a great donor dam and show heifer!
- Consigned by: JC Cattle Co., 1490 N County Rd. 1150 W, Norman, IN 47264 | 812-528-5838



MSU TCF REVOLUTION 4R — SIRE OF LOT 20

20 JC PRECIOUS ZSA ZSA 8M {DBP}

COW — P44595780 — Calved: 6/10/24 — Tattoo: RE JC/LE 8M

FELTONS LEGEND 242 {SOD}{HYF}
MSU TCF REVOLUTION 4R {SOD}{DLF,HYF,REF,MDF,DBF}
P42593689 MSU TCF RACHAEL ET 54N {DLF,HYF,REF,DBP}

FELTONS DOMINO 774 {SOD}{DLF,HYF,REF}
FELTONS G15 {HYF}
REMITALL ONLINE 122L {SOD}{CHB}{DLF,HYF,REF,DBF}
HH MISS ADV 7866 1ET {IEP}

PW VICTOR BOOMER P606 {SOD}{DLF,HYF,REF,MDF}
JC PRECIOUS P606 8W
P43103302 JC CATALY BELLE 8G

REMITALL BOOMER 46B {SOD}{DLF,HYF,REF}
PW VICTORIA 964 8114 {DLF,HYF,REF}
JC CATALYST {SOD}{DLF,HYF,REF}
JC MISS REAL J2RY

CE 0.3 (0.2); **BW** 2.6 (0.25); **WW** 54 (0.23); **YW** 82 (0.23); **DMI** 0.3 (0.08);
SC 0.9 (0.19); **SCF** 16.9 (0.21); **MM** 28 (0.22); **M&G** 55; **MCE** 2.8 (0.20); **MCW** 97 (0.21);
UDDR 1.30 (0.26); **TEAT** 1.30 (0.26); **CW** 69 (0.03); **FAT** 0.023 (0.03); **REA** 0.75 (0.03);
MARB 0.09 (0.03); **BMI\$** 364; **BIIS** 432; **CHBS** 111

- 8m was bred to replace her full sister who became Reserve Champion Female @Louisiana State Fair.
- We traded for her back and she became a great uddered and heavy milking cow. She has 7 generations of JC bred cows backing her up!
- Consigned by: JC Cattle Co., 1490 N County Rd. 1150 W, Norman, IN 47264 | 812-528-5838



LOT 21 — JC B413 BOLD RULER 49ZL

21 JC B413 BOLD RULER 49ZL {DLF,HYF,REF,MSUDF,MDF,DBF}

BULL — P44512881 — Calved: 6/16/23 — Tattoo: RE JC/LE 49ZL

EFBEEF TFL U208 TESTED X651 ET {SOD}{CHB}{DLF,HYF,REF,MSUDF}
EFBEEF BR VALIDATED B413 {SOD}{CHB}{DLF,HYF,REF,MSUDF,MDF,DBF}
P43558667 EFBEEF 4R THYRA Y865 {DLF,HYF,REF,MDF,DBF}

EFBEEF FOREMOST U208 {SOD}{CHB}{DLF,HYF,REF,MSUDF}
EFBEEF P606 MABEL R415
MSU TCF REVOLUTION 4R {SOD}{DLF,HYF,REF,MDF,DBF}
EFBEEF N014 THYRA S645 {SOD}{DLF,HYF,REF}



TANWSFHCC 106G 47N BOLD 742T ET {DLF,HYF,REF}
JC 49U 742T ZELDA 49Z
P43292127 JC P606 STYRA 49U {DLF,HYF,REF,MSUDF}

NJW MC WSF TRAIL BOSS 47N ET
LLL LADY PACER 07C 106G {HYF}
PW VICTOR BOOMER P606 {SOD}{DLF,HYF,REF,MDF}
JC QUEEN DOM 49D {HYF}

CE 7.1 (0.3); **BW** 1.1 (0.47); **WW** 55 (0.41); **YW** 81 (0.41); **DMI** 0.1 (0.14);
SC 1.5 (0.36); **SCF** 23.7 (0.32); **MM** 36 (0.28); **M&G** 63; **MCE** 4.9 (0.32); **MCW** 57 (0.33);
UDDR 1.40 (0.43); **TEAT** 1.40 (0.43); **CW** 75 (0.10); **FAT** 0.033 (0.10); **REA** 0.95 (0.10);
MARB 0.60 (0.10); **BMI\$** 504; **BIIS** 609; **CHBS** 173

- Offering 1/2 semen interest and 1/2 possession in this great son of EF BEEF BR Validated B413, he was summer Champion Bull @KY and IN State Fairs.
- His dam is 13 yrs old and still has small teats and a perfect udder.
- JC cattle plans to use him heavily. If you are looking for a bull to increase marbling and produce productive females, here is your chance!
- Consigned by: JC Cattle Co., 1490 N County Rd. 1150 W, Norman, IN 47264 | 812-528-5838

22

JCC - SFF MANDY 8JM {DBP}

COW — P44541745 — Calved: 3/4/24 — Tattoo: RE JC/LE 8JM

R LEADER 6964 (SOD) (DLF,HYF,REF,MSUDF,DBF)
/S MANDATE 66589 ET (DLF,HYF,REF,MSUDF,MOD,DBF)
 P43834732 /S LADY DOMINO 0158X (DLF,HYF,REF)

HYALITE ON TARGET 936 (SOD) (DLF,HYF,REF,MSUDC)
 R MISS REVOLUTION 1009 (MOD) (DLF,HYF,REF,DBF)
 SHF RIB EYE M326 R117 (SOD) (CHB) (DLF,HYF,REF)
 /S LADY DOMINO 652S (DLF,REF)

MSU TCF REVOLUTION 4R (SOD) (DLF,HYF,REF,MSUDC,DBF)
JC 4R PRINCESS 8VJ (DBP)
 P44320779 JC 8W 743 PRINCESS 8Y

FELTONS LEGEND 242 (SOD) (HYF)
 MSU TCF RACHAEL ET 54N (DLF,HYF,REF,DBF)
 CRR ABOUT TIME 743 (SOD) (DLF,HYF,REF,MOD)
 JC PRECIOUS P606 8W

CE 11.1 (0.2); **BW** -2.1 (0.33); **WW** 56 (0.25); **YW** 83 (0.25); **DMI** 0.1 (0.09);
SC 1.2 (0.20); **SCF** 20.8 (0.20); **MM** 26 (0.21); **M&G** 53; **MCE** 3.4 (0.20); **MCW** 110 (0.21);
UDDR 1.30 (0.25); **TEAT** 1.30 (0.25); **CW** 68 (0.03); **FAT** 0.053 (0.03); **REA** 0.53 (0.03);
MARB 0.23 (0.03); **BMS** 427; **BIIS** 510; **CHBS** 124

- It's hard not to look at Mandy's star-studded pedigree and not get excited with breed greats such as Mandate, Leader 6964, Rib Eye, Revolution 4R, and About Time 743!
- We purchased her dam, JC Princess, from JC Cattle in Norman, Indiana and Mandy was her first calf.
- This heifer could absolutely be a junior project, but her real winning is going to come in the pasture as a brood cow! Let our loss be your gain on this heifer.
- **Consigned by: Smith Family Farm — Ben Smith, 531 Seminole Trail, Brandenburg, KY 40108 | 270-547-8484**

**/S MANDATE 66589 ET — SIRE OF LOT 22**

23

FB FARMS ABIGAIL 2309 {HYP,MDP}

COW — P44467407 — Calved: 3/16/23 — Tattoo: BE 2309

/S MANDATE 66589 ET (DLF,HYF,REF,MSUDF,MOD,DBF)
WF NECESSITY 3009 2169 ET (CHB) (DLF,HYF,REF,MSUDF)
 P44119776 THM X51 201E 3009 (MOD) (DLF,HYF,REF)

R LEADER 6964 (SOD) (DLF,HYF,REF,MSUDF,DBF)
 /S LADY DOMINO 0158X (DLF,HYF,REF)
 KCF BENNETT REVOLUTION X51 (SOD) (CHB) (DLF,HYF,REF,MOD,DBF)
 THM 5076 CHLOE 1092 ET (DLF,HYF,REF,MSUDF)

WF HAF 8Y JACK E130 ET (DLF,HYF,REF,MODC)
FB FARMS ABBY (HYP,MDP)
 P44265505 FB FARMS NEW YEARS EVIE (HYP)

NJW 73S W18 HOMEGROWN 8Y ET (SOD) (DLF,HYF,REF,MSUDF,MODC,DBF)
 LPH ROXIE P606 L1003 (DLF,HYF,REF)
 FTF PORTERHOUSE 455B (SOD) (DLF,HYF,REF)
 LOF MIS VIC 12F 17S (HYP)

CE 4.4 (0.13); **BW** 1.7 (0.17); **WW** 60 (0.16); **YW** 95 (0.16); **DMI** 0.1 (0.06);
SC 1.2 (0.13); **SCF** 19.5 (0.13); **MM** 30 (0.10); **M&G** 59; **MCE** 0.0 (0.13); **MCW** 97 (0.13);
UDDR 1.20 (0.17); **TEAT** 1.30 (0.17); **CW** 71 (0.03); **FAT** 0.052 (0.03); **REA** 0.43 (0.03);
MARB 0.23 (0.03); **BMS** 409; **BIIS** 496; **CHBS** 130

- We acquired Abigail as a young heifer calf and decided to offer her as a good, spring bred heifer in this expo sale. Easy keeping and moderate in her post-yearling growth curve, Abigail offers a pedigree you can go many different directions with.
- Bred AI on 6/23/24 to NJW 73S 38W Ridge 103C ET, then pasture exposed to DWF D46 Karat Victor C4 K26 (Reg. #44490250). Victor K26 is a linebred Victor bull we purchased from the Dogwood Farms program in LaCenter, Ky and currently serves as one of our herd sires. That outcross mating would result in an exciting offspring. AI or naturally bred, this heifer is destined to have a nice calf and yield a great return on investment with longevity and consistency in mind.
- Pictures and videos of our SFF consignments will be available on our Facebook page and at smithfamilyfarmky.com.
- **Consigned by: Smith Family Farm — Ben Smith, 531 Seminole Trail, Brandenburg, KY 40108 | 270-547-8484**

**NJW 73S 78W RIDGE 103C ET
— FEATURED AI SIRE FOR LOT 23**

24

BECKLEY H086 LUCY 4013 {DBP}

COW — P44598402 — Calved: 2/1/24 — Tattoo: BE 4013

SHF DAYBREAK Y02 D287 ET (CHB) (DLF,HYF,REF,MSUDF)
SHF HOUSTON D287 H086 (CHB) (DLF,HYF,REF,MSUDF,MOD,DBF)
 P44123641 SHF MISS 14 20Z D223 (DLF,HYF,REF,DBP)

SHF YORK 19H Y02 (SOD) (CHB) (DLF,HYF,REF)
 SHF MISS M326 T08 ET (DLF,HYF,REF)
 LOEWEN 44X 6X 20Z (DBP)
 SHF RADAR R125 T75 (DLF,HYF,REF,DBP)

BECKLEY 9050 PAYDIRT 8018 (DLF,HYF,REF,DBP)
BECKLEY 8018 LUCY 0021 (DBP)
 P44187513 BECKLEY MS DISTINCTION 5003

BOYD WORLDWIDE 9050 ET (SOD) (DLF,HYF,REF,MSUDF,MOD,DBF)
 GRASSY RUN QUEEN TEN 2026 (MOD) (DBP)
 UPS DISTINCTION (SOD) (CHB) (DLF,HYF,REF,MSUDF,MOD)
 BECKLEY 55M MS ABSOLUTE 3030

CE -4.2 (0.2); **BW** 5.0 (0.36); **WW** 75 (0.26); **YW** 120 (0.25); **DMI** 0.4 (0.09);
SC 1.5 (0.19); **SCF** 19.4 (0.16); **MM** 28 (0.16); **M&G** 66; **MCE** -1.9 (0.17); **MCW** 99 (0.16);
UDDR 1.40 (0.23); **TEAT** 1.40 (0.25); **CW** 87 (0.03); **FAT** 0.023 (0.03); **REA** 0.70 (0.03);
MARB 0.14 (0.03); **BMS** 425; **BIIS** 520; **CHBS** 145

- Lucy has it all. Pedigree, EPDs, and phenotype.
- Houston needs no introduction. Her dam is stout and very productive. This one will be a front pasture cow.
- Sells open. OCV.
- **Consigned by: Beckley Herefords — L.W. Beckley, 284 Pryse Lane, Irvine, KY 40336 | 859-779-1419**

**SHF HOUSTON D287 H086 — SIRE OF LOT 24**

25 BECKLEY 107H VICKIE 4067 {HYP,MOP,DBP}

COW — P44619743 — Calved: 9/18/24 — Tattoo: BE 4067

HARVIE OVHF EMPOWER ET 5F {DLF,HYP,IEF,MSUDF,MDF}
HARVIE POWER MAKER 107H {HYP,MOP}
P44255080 HARVIE SHAR-LO MS FIREFLY 66C {HYP,MOP}

R LEADER 6964 {SOD}{DLF,HYP,IEF,MSUDF,DBF}
NEXT GEN RIESLING 295 ET {DLF,HYP,IEF,MSUDF}
NJW 73S W18 HOMETOWN 10Y ET {SOD}{CHB}{DLF,HYP,IEF,MSUDF,MDC}
HARVIE SHAR-LO MS FIREFLY 116A {HYP}

BECKLEY 719T VICTOR 2014 {DLF,HYP,IEF,DBP}
BECKLEY 2014 VICKIE 5043 {DBP}
P43666571 BECKLEY P430 BOOM BABY 871U {DBP}

TH 122 711 VICTOR 719T {SOD}{DLF,HYP,IEF,MSUDF,MDF,DBF}
BECKLEYS 4217 MS ONSTAR 843U {DLF,HYP,DBP}
PWF MOHICAN KABOOM P430 ET {DLF,HYP,IEF}
SR ONLINE LIBERTY 114P {DLF,HYP,IEF,DBP}

CE 1.7 (0.1); BW 4.4 (0.31); WW 62 (0.21); YW 94 (0.21); DMI 0.4 (0.08);
SC 1.2 (0.14); SCF 15.8 (0.12); MM 20 (0.13); M&G 51; MCE -2.7 (0.12); MCW 91 (0.11);
UDDR 1.40 (0.20); TEAT 1.40 (0.21); CW 81 (0.03); FAT 0.013 (0.03); REA 0.64 (0.03);
MARB 0.10 (0.03); BMIS 356; BIIS 432; CHBS 128

- Nice fall baby here.
- Out of a solid cow and our herdsire from Harvie Ranching in Canada. First opportunity to buy a female from him at public auction.
- Sells open.
- Consigned by: Beckley Herefords — L.W. Beckley, 284 Pryse Lane, Irvine, KY 40336 | 859-779-1419

HARVIE POWER MAKER 107H — SIRE OF LOT 25

26 PF QUEEN 02M {DLF,HYP,IEF,MSUDF,MDC,DBF}

COW — P44583743 — Calved: 4/24/24 — Tattoo: BE 02M

ASM 58A STUD 823F {DLF,HYP,IEF,MOP}
HWW HUDSON 105H {DLF,HYP,IEF,MSUDF,MOP,DBP}
P44111965 BP CB PASTY 304A 605C {DBP}

CHURCHILL STUD 3134A {SOD}{CHB}{DLF,HYP,IEF,MDF,DBF}
NJW 402X 8Y BELLE 58A {DLF,HYP,IEF,MOP}
BP CB CARLOS 602 4Y {DLF,HYP,IEF,DBP}
BP CB PATSY 3147 304A ET



PF TIME TRAVELER 02E {DLF,HYP,IEF,DBP}
PF QUEEN 16H {HYP,DBP}
P44253236 PF FUTURE QUEEN 09F {HYP,DBP}

LCC FB TIME TRAVELER 480 {DLF,HYP,IEF,MSUDF,DBP}
GV CMR LASS A241 ET {DLF,HYP,IEF}
TF JAMES 237 820 ET {HYP}
BURKS FUTURE QUEEN 0598 363W ET {HYP,DBP}

CE -7.4 (0.24); BW 5.8 (0.36); WW 58 (0.32); YW 95 (0.32); DMI 0.0 (0.11);
SC 0.8 (0.26); SCF 16.4 (0.26); MM 32 (0.14); M&G 60; MCE 6.8 (0.25); MCW 127 (0.25);
UDDR 1.10 (0.32); TEAT 1.00 (0.31); CW 68 (0.31); FAT 0.002 (0.10); REA 0.56 (0.10);
MARB 0.09 (0.10); BMIS 367; BIIS 439; CHBS 120

- A very completed, clean fronted spring yearling female that will work in anyone's replacement program. She has potential to be competitive in the show ring as well as making a productive and profit making brood cow in the pasture field long after her show career is over. Going back to the famous 'Burks Delivery Queen' donor cow from the Burks cattle company, she has power in the blood!! Don't pass her up in the stalls in Louisville!
- Consigned by: Popplewell Farms — Alex Popplewell, 1176 Clearfork Road, Russel Springs, KY 42642 | 270-566-8822



LOT 26 — PF QUEEN 02M

28 — PENDING — Calved: - — Tattoo: -



CE - (-); BW - (-); WW - (-); YW - (-); DMI - (-);
SC - (-); SCF - (-); MM - (-); M&G - (-); MCE - (-); MCW - (-);
UDDR - (-); TEAT - (-); CW - (-); FAT - (-); REA - (-);
MARB - (-); BMIS - (-); BIIS - (-); CHBS -

- CC Tweety is a very nice clean fronted, deep bodied heifer.
- Should make a great prospect for a junior to show this year!
- A powerful Ft. Knox dam did well raising this calf. CC Tweety I'm sure will do the same in her future for anyone's cow herd.
- Consigned by: Crystal Campbell and Cody Latham, 1070 Logan Rd., Gravel Switch, KY 40328 | 859-374-1343

27 — PENDING — Calved: - — Tattoo: -



CE - (-); BW - (-); WW - (-); YW - (-); DMI - (-);
SC - (-); SCF - (-); MM - (-); M&G - (-); MCE - (-); MCW - (-);
UDDR - (-); TEAT - (-); CW - (-); FAT - (-); REA - (-);
MARB - (-); BMIS - (-); BIIS - (-); CHBS -

- CC Jazzy is one that will catch your eye out in the field.
- Dark red, pigmented. It was a tough decision for us to let this one go, but we cant keep them all. A young junior would have some fun at junior nationals and all summer with this heifer.
- Consigned by: Crystal Campbell and Cody Latham, 1070 Logan Rd., Gravel Switch, KY 40328 | 859-374-1343

Semen Lot

29 WF CLC JT WILD CARD 76E 2505ET {DLF,HYF,IEF,MSUDF}

SEMEN — P44448090 — Calved: 10/8/22 — Tattoo: RE 2505

EFBEEF TFL U208 TESTED X651 ET (S00){CHB}{DLF,HYF,IEF,MSUDF} EFBEEF FOREMOST U208 (S00){CHB}{DLF,HYF,IEF,MSUDF}

EFBEEF BR VALIDATED B413 (S00){CHB}{DLF,HYF,IEF,MSUDF,MDF,DBF} EFBEEF P606 MABEL R415

P43558667 EFBEEF 4R THYRA Y865 (DLF,HYF,IEF,MDF,DBF) MSU TCF REVOLUTION 4R (S00){DLF,HYF,IEF,MDF,DBF}

EFBEEF N014 THYRA S645 (S00){DLF,HYF,IEF}

TH 403A 475Z PIONEER 358C ET (S00){DLF,HYF,IEF,MSUDF} TH 89T 755T STOCKMAN 475Z (S00){DLF,HYF,IEF}

TH 329 358C LANA 76E (DLF,HYF,IEF,MSUDF,MDF,DBF) TH 71U 17Y RITA 403A (DLF,HYF,IEF)

P43818744 FTF 722T MS LOGIC 329A (DLF,HYF,IEF) KJ C&L J119 LOGIC 023R ET (S00){DLF,HYF,IEF,MDF,DBF}

FTF CHICKA BOOM 722T (DLF,HYF,IEF)

CE 3.3 (0.3); BW 2.0 (0.47); WW 76 (0.44); YW 115 (0.44); DMI 0.8 (0.14);
SC 1.4 (0.40); SCF 22.8 (0.34); MM 29 (0.31); M&G 67; MCE 3.9 (0.35); MCW 88 (0.36);
UDDR 1.40 (0.45); TEAT 1.20 (0.45); CW 79 (0.10); FAT 0.073 (0.10); REA 0.74 (0.10);
MARB 0.66 (0.10); BMIS 481; BIIS 613; CHBS 169

- Selling five (5) packages of five (5) units of semen.
- Homozygous polled.
- If you are looking for a true carcass bull that comes with pigment, style, guts and quality then Wild Card is an intriguing option. He may be the stoutest son of Validated B413.
- Ranks in the top 1% for Marbling
- Ranks in the top 2% for WW
- Ranks in the top 5% for YW
- Ranks in the top 4% for CHB
- Ranks in the top 9% for REA
- Co-owned with Chapman Land & Cattle, J.T. Woolfolk in TN. and Bill Litman in PA.
- Consigned by: Dale Stith, 5239 Old Sardis Pike, Mays Lick, KY 41055 | 918-760-1550



WF CLC WILD CARD 76E 2505ET

Donation Lot

30 BOYD 31Z BLUEPRINT 6153 {DLF,HYF,IEF,MSUDF,MDF,DBF}

SEMEN — P43764491 — Calved: 10/4/16 — Tattoo: BE 6153

HYALITE ON TARGET 936 (S00){DLF,HYF,IEF,MSUDF} SCHU-LAR ON TARGET 22S (S00){CHB}{DLF,HYF,IEF,MSUDF,MDF,DBF}

R LEADER 6964 (S00){DLF,HYF,IEF,MSUDF,DBF} HYALITE TS LASS 310 (DLF,HYF,IEF)

P43500058 R MISS REVOLUTION 1009 (S00){DLF,HYF,IEF,DBF} MSU TCF REVOLUTION 4R (S00){DLF,HYF,IEF,MDF,DBF}

R MISS WRANGLER 3007

NJW 73S M326 TRUST 100W ET (S00){CHB}{DLF,HYF,IEF,MSUDF,MDF,DBF} KCF BENNETT 3008 M326 (S00){CHB}{DLF,HYF,IEF,MDF,DBF}

NJW 91H 100W RITA 31Z ET (DLF,HYF,IEF) NJW P606 72N DAYDREAM 73S (DLF,HYF,IEF,MSUDF,MDF)

P43312368 REMITALL RITA 91H (DLF,HYF,IEF) FELTONS 517 (S00){DLF,HYF,IEF,MSUDF}

REMITALL FLORIAL RITA 102F

CE 10.5 (0.8); BW 1.0 (0.93); WW 62 (0.89); YW 91 (0.88); DMI -0.2 (0.53);
SC 1.9 (0.80); SCF 21.6 (0.67); MM 27 (0.75); M&G 58; MCE 2.6 (0.72); MCW 75 (0.70);
UDDR 1.50 (0.86); TEAT 1.60 (0.86); CW 69 (0.62); FAT 0.053 (0.62); REA 0.50 (0.60);
MARB -0.05 (0.62); BMIS 430; BIIS 501; CHBS 107

- Three (3) Straws of Heifer Sexed Semen
- Donation to Kentucky Junior Hereford Association.
- Consigned by: Leaning Pine Farms — Jack Bruner, Science Hill, KY | 606-802-4299



BOYD 31Z BLUEPRINT 6153

Terms and Conditions

TERMS: Terms of the sale are cash. Each animal will be sold to the highest bidder. The auctioneer will settle any disputes as to bids.

PURCHASE: Each animal will be at the purchaser's risk as soon as sold and can be moved after settlement has been made. The animal can be left in the West Wing for 24 hours at the purchaser's risk of loss or injury.

HEALTH: All cattle will have health certificates that will enable them to be shipped to any state.

CONSIGNOR'S RESPONSIBILITY: The seller is the responsible party for all representations made about his cattle. The management of the sale assumes no liability, legal or otherwise, but will endeavor to protect the interest of both the buyer and the seller.

CHANGES: Changes in these conditions will be binding only when reduced to writing and signed by the seller, buyer or clerk of the sale. Verbal agreements result in misunderstanding and the above rule is made to avoid such. Any changes in breeding dates will be announced sale day. Announcements from the sale box take precedence over anything printed in this catalog.

PAPERS: The certificates will be transferred to the buyer at the seller's expense. All calves born after the sale are to be registered by the purchaser. No AI certificates are furnished.

NOTE: As the sale manager, Kentucky Hereford Association is only an agent for the seller and has no responsibilities other than those involved in conducting the sale. All persons who attend the sale do so at their own risk. Neither the owners of the consigned cattle nor the Kentucky Hereford Association assumes liability, legal or otherwise, for any accidents which may occur.



KENTUCKY HEREFORD ASSOCIATION

L.W. Beckley - President

Melinda Watson - Secretary/Treasurer

DIRECTORS

Steven Green

L.W. Beckley

Austin Cole

Chris Schalk

Codee Guffee

Dustin Ogburn

Eric Thomas

Tim Wolf

Adam Gordon

Austin Matheny

Shannon Morgan

Alonda Imbruglio



Hereford Show and Sale Feb.28-March 2, 2025

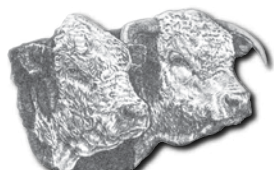
JACKPOT HEIFER SHOW

Sunday, March 2, 2025 • 8:00 a.m.

JACKPOT STEER SHOW & MARKET HEIFER SHOW

Sunday, March 2, 2025 • 8:00 a.m.

For additional rules and information, contact Chris Caudill 502-564-4983.



2025 KENTUCKY FARM BUREAU BEEF EXPO

Hereford Show and Sale

Consignors	Bulls	Females
Lakeside Cattle Campbellsville, KY Brent Keith 270-250-3793		1, 2, 3
Cottage Hill Farm Petersburg, WV David Taylor 304-257-0263	6, 7	4, 5, 8
Maggie Danko Shelburn, IN Jason Danko 812-870-7413	9	10
Helsing Polled Herefords Germantown, OH Chris Helsing 937-751-9841	11	12
Martin Farms California, KY Jarred Martin 859-801-3288	13	14
Harlee Watson Flemingsburg, KY Matt Watson 606-748-1600		15
Mary Carter Shirley Sparta, TN Buyrl Shirley 931-273-4392		16, 17
Dr. Maurice Nida Big Stone Gap, VA 276-393-3206		18
JC Cattle Co. Norman, IN Jim Curry 812-528-5838	21	19, 20
Smith Family Farm Brandenburg, KY Ben Smith 270-547-8484		22, 23
Beckley Herefords Irvine, KY L.W. Beckley 859-779-1419		24, 25
Popplewell Farms Russel Springs, KY Alex Popplewell, 270-566-8822		26
Crystal Campbell and Cody Latham Gravel Switch, KY 859-374-1343		27, 28
Dale Sith Mays Lick, KY 918-760-1550	29	
Leaning Pine Farms Science Hill, KY Jack Bruner 606-802-4299		30

Suzanne Matheny
6706 US 68
Mayslick, KY 41055

Dated Material



Kentucky Farm Bureau Beef Expo
Hereford Show and Sale

Show on March 1—1:00 p.m.
Sale on March 2—8:00 a.m.