

Simmental Show & Sale

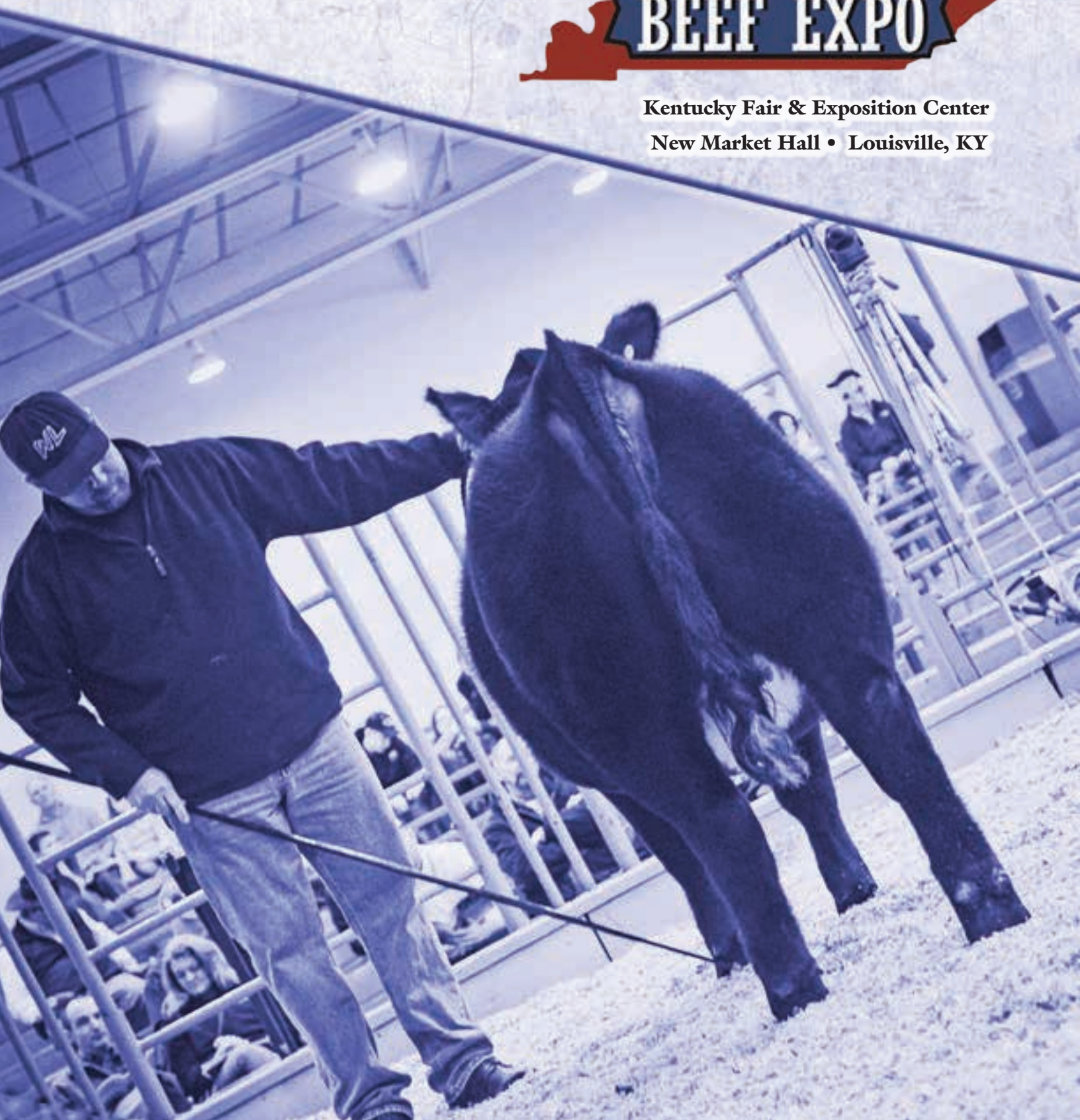
March 1, 2014

11:00 AM



Kentucky Fair & Exposition Center

New Market Hall • Louisville, KY





Doug & Debbie Parke
Drew & Holli Hatmaker • (423) 506-8844
 153 Bourbon Hills • Paris KY 40361
 (859) 987-5758 • (859) 987-0709 fax
 (859) 421-6100 mobile • e-mail: pleent@aol.com

Greetings Simmental Breeders!

I would like to take this opportunity to invite you and your family to the Kentucky Beef Expo Simmental Show and Sale. Kentucky is lucky to have the support of Agriculture programs by Commissioner of Agriculture James Comer, his staff, the Kentucky Department of Agriculture, and the Kentucky Farm Bureau. We feel very fortunate to be able to work with a group of people who support the beef cattle industry.

We, along with the Kentucky Simmental Association find it very important to make sure the Simmental breed is well represented at the Beef Expo. The Simmental Show and Sale is always one of the largest and most successful at this event. This would not be possible without the outstanding set of genetics that are offered by Simmental breeders in Kentucky and the support of programs from surrounding states. One of the great things about the Beef Expo Simmental Sale is there is truly something for everyone. The offering includes opens; both purebred and percentage, breds, herd sires, and genetic lots. This is a great place to find exactly what you've been looking for! Take this opportunity to buy your junior heifer for the 2014 AJSA National Jr heifer show which will be held right here in Louisville hosted by the state of Illinois.

Make sure you check out the schedule to see the many events that are offered at the Kentucky Beef Expo. You and your family can make it a weekend event with the sales, trade show, followed by the junior show on Sunday. All open females that sell in the sale are eligible to show on Sunday, so load up the family, come, buy, and show! Where else can you do all that in one weekend?

If you have any questions prior to the sale please contact myself or Drew Hatmaker. We will be happy to assist you in any way possible. If you cannot be with us, utilize www.dvauction.com to bid online. As always we look forward to seeing you at the Kentucky Beef Expo Simmental events.

Doug Parke

DP Sales Management



Kentucky Simmental Association Officers

Derek Tingle, *President*
 Johnny Moore, *Vice President*
 Lori Graves, *Secretary*
 Tonya Phillips, *Treasurer*

DVAuction
 Broadcasting Real-Time Auctions

Never Miss An Auction Again!
 Watch & Bid online for FREE!

Visit www.DVAuction.com
 and Register Today!

For General Questions Please Contact Our Office:
 (402) 318-5482 or support@dvauction.com

Check out Kentucky Beef Expo sale catalog on our DP Sale App

Scan with your Android

Scan with your iPhone



James B. Comer
 Commissioner



Phone: (502) 572-8839
 Fax: (502) 571-8844
 Email: jcomer@kyagr.com

Dear friends,

Welcome to the 22nd Annual Kentucky Farm Bureau Beef Expo at the Kentucky Exposition Center. The Kentucky Department of Agriculture and Kentucky Farm Bureau are proud to sponsor the premier beef cattle event in the Commonwealth of Kentucky.

With beef cattle, as with all livestock, greatness begins in the genes, and buyers can find the best genetics in the business at the Kentucky Farm Bureau Beef Expo. I'm a cattleman myself, and I understand the importance of a strong genetics base in building a successful herd.

Last year's Expo generated more than \$1 million in gross sales, rewarding efforts to make the Expo an appealing and useful event for the beef cattle industry. Numbers for all breeds and the pen heifer sale this year are expected to exceed 2013 levels.

Young exhibitors select project animals for the 2014 show circuit and take part in the junior show. Kentucky continues to increase its influence here; last year, 169 of the 500 entries in the junior show were Kentucky animals, an increase of 31 head from the previous year. The judging contest provides another opportunity for our youth to sharpen their skills.

As Commissioner of Agriculture, I am proud to be involved with this great program in the Kentucky Exposition Center, one of the finest exposition facilities in the nation with 1.2 million square feet of enclosed, climate-controlled exhibition space. Please let me or my staff know how we can help make this year's Kentucky Farm Bureau Beef Expo a great one for you.

Sincerely,

James Comer

JAMES COMER
 Commissioner of Agriculture
 Commonwealth of Kentucky



www.kyagr.com



Kentucky Farm Bureau Federation

501 West Parkway P.O. Box 20764 Louisville, KY 40220-0764
 Telephone: (502) 485-4888 Fax: (502) 485-3114

Welcome to the 2014 Kentucky Farm Bureau Beef Expo and Simmental Show and Sale. We are very proud to serve as the corporate sponsor of the expo.

With nearly 300,000 members, Kentucky Farm Bureau is actively involved in ensuring that Kentucky agriculture remains a strong and vital element of our Commonwealth's economy.

Beef cattle are an integral part of Kentucky agriculture. We applaud the efforts of those who work so diligently to improve an industry already known for its excellence, through events such as the 2014 Kentucky Farm Bureau Beef Expo.

Considering ever increasing consumer demand for high-quality and safe food, efforts to improve Kentucky's beef cattle industry are now more important than ever. The Expo offers you the latest industry news and information, along with the opportunity to obtain some of the best breeding stock in the United States.

Again we welcome you to the 2014 Kentucky Farm Bureau Beef Expo, and hope the many valuable resources available here will benefit both you and your cattle operation.

Sincerely,

Mark Hanes

Mark Hanes
 President

"Voice of Kentucky Agriculture"



Simmental Show & Sale

Show... 4 pm, Friday, February 28th, 2014 Sale... 11 am, Saturday, March 1, 2014

Kentucky Fair & Exposition Center • New Market Hall • Louisville, Kentucky

Selling 50 Simmental Lots

Sale Day Phones...

(502) 367-5472 • (859) 421-6100

Sale Headquarters...

Holiday Inn Southwest

4110 Dixie Hwy • Louisville, KY 40216

502-966-0000 • rate \$119.00 plus tax ask

Ask for Kentucky Beef Expo Block • Cut-off date: February 18

Other hotel:

Comfort Suites Airport, Louisville • (502)964-0704

6535 Paramount Park Dr. • Louisville, KY 40213

Ask for Sharon Klein or Lisa Brook.

Sale Manager...



Doug & Debbie Parke

Drew & Holli Hatmaker • (423) 506-8844

153 Bourbon Hills • Paris KY 40361

(859) 987-5758 • (859) 987-0709 fax

(859) 421-6100 mobile • e-mail: pleent@aol.com

Auctioneer...

Col. Bruce Miller • (817) 247-0115

Sale Staff...

Shane Ryan, special assignment • (309) 371-7490

Tommy Carper, special assignment • (540) 336-2737

Andee Marston, special assignment • (931) 335-0303

Sale Consultants...

DP Sales Management

Doug Parke • (859) 421-6100

Drew Hatmaker • (423) 506-8844

Dalton Lundy • (502) 727-6898

Trucking...

Sam Harroun • (319) 325-9389

Mark Howard • (865) 300-3636

Special Guests...

Steve Downs, President of Kentucky Cattlemen's Association

Dave Maples Executive Vice President Kentucky Cattlemen's Assoc.

Insurance...

Insurance for your purchases will be available sale day at the clerk's desk. Jamie Secondino, American Livestock Ins. • (812) 208-0956

Sale Terms & Conditions...

All buyer numbers will only be issued with a valid ID and payment is due day of sale. DP Sales Management would appreciate timely settlement of receivables within 15 days of date of sale. Any person not complying with that guideline will be pursued legally. Cattle will not be transferred until paid for in full. DP Sales accepts Visa & Mastercard.

Herd Health...

All cattle will have interstate health charts required for shipping into other sections of the United States. All Bred females will have been pregnancy examined.

Purchaser's Risk...

Each animal becomes the property of, and therefore the risk of the purchaser as soon as sold. It shall be the obligation of the seller to see that animals are fed and cared for (free of charge) until loaded for shipment or until the expiration of 24 hours after the sale, whichever occurs first.

Guarantee...

All cattle sell fully guaranteed under the Suggested Terms and Conditions of the American Simmental Association.

Announcements...

Announcements made from the auction block by the owners or the auctioneer will take precedence over statements in the sale catalog. We reserve the right to withdraw any sale lots not meeting our specifications prior to sale time

Note...

All persons who attend the sale do so at their own risk. Neither the owners nor the sale manager assume liability legal or otherwise for any accidents or loss of property. As the sale manager, DP Sales Management is only an agent for the seller and has no responsibilities other than those involved in conducting the sale.

Catalog Produced By

EDJE

866.839.3353 | www.edje.com

4th Meridian Farm, Inc.
Rio, IL • 309-297-0293

AK/NDS Simmentals
Danielsville, GA • 706-202-2333

Clearwater Simmentals
Milan, IN • 812-654-2030

Double Image Cattle Co.
Atlanta, IN • 765-675-7854

Edwards Simmental Farms
Greenfield, IN • 217-326-3229

Flat Rock Farms
New Castle, IN • 765-545-0385

Four F Farms
Glasgow, KY • 270-261-1253

Jeff Hamilton
Carlisle, KY • 859-749-6815

Hege Cattle Company
Columbus, IN • 812-546-5635

Hudson Pines Farm
Sleepy Hollow, NY • 815-499-0522

KA Cattle & Six Bar R
Homer, IL • 715-684-9222, Roger Allen or
217-202-3927, Randy Allen

Krieger Farms
Universal, IN • 812-239-5102

Maple Leaf Farm
Morehead, KY • 859-227-7323

Misty Meadows Farm
Rondal Dawson • 502-829-5489 or
502-593-5136

Neal Bros. Simmentals
Bicknell, IN • 812-881-9381

Pickrel Farms
Athens, GA • 706-788-3466

Rocking P Livestock
Maysville, KY • 606-759-7633

Rustic Hills Cattle Co.
Fort Branch, IN • 812-304-0361

Stephens Beef Cattle
Ewing, KY • 606-782-7640

Sloup Simmentals
Seward, NE • 402-643-4429

Sunset View Farm
Auburn, KY • 270-725-6467

Tingle Farms
New Castle, KY • 502-682-0806

Welsh Simmentals
Glasgow, KY • 270-427-4717

Wesner Livestock Ent.
Chalmers, IN • 219-984-5587

Young Show Cattle
Sumner, IL • 618-838-4078

DVAuction
Broadcasting Real-Time Auctions

Can't make the sale?
Let DVAuction bring the sale
to you!
Busy during the sale?
Let DVAuction represent
your bid!

Visit www.DVAuction.com
and Register Today

For General Questions
Please Contact Our Office:
(402) 316-5460 or
support@dvauction.com



**Purchase your next show heifer for AJSA
National Show to be held in Louisville
hosted by the state of Illinois.**



2014 Kentucky Farm Bureau Beef Expo Schedule

Friday, February 28th - Sunday, March 2nd

Angus
Show: Friday 10:00 AM
Sale: Saturday 12:00 Noon

Beefalo
Show: Friday 2:30 PM
Sale: Saturday 9:30 AM

Charolais
Show: Saturday 12:00 (noon)
Sale: Saturday 4:00 PM

Gelbvieh
Show: Friday 1:00 PM
Sale: Saturday 11:30 PM

Limousin
Show: Saturday 10:00 AM
Sale: Saturday 3:30 PM

Hereford
Show: Friday 1:00 PM
Sale: Saturday 1:00 PM

Red Angus
Show: Friday 10:00 AM
Sale: Saturday 10:00 AM

Red Poll
Show: Friday 4:00 PM
Sale: Saturday 9:30 AM

Shorthorn
Show: Saturday 10:00 AM
Sale: Saturday 1:00 PM

Simmental
Show: Friday 4:00 PM
Sale: Saturday 11:00 AM

Pen Heifer Sale
Show: Friday 2:00 PM
Sale: Saturday 2:00 PM

*These breed sales have produced
several National Champions.
Over 700 head of top quality show
heifers donor prospects, and herd
bulls with proven genetics and
excellent EPDs will sell!*

*For more information go to ...
www.kybeefexpo.com*

Major Co-Sponsors:
Kentucky Farm Bureau, Farm Credit Mid-America,
Merical, Kentucky Cattleman's Association and
The Kentucky Department of Agriculture, James R.
Comer, Commissioner

Don't Miss These Other Expo Events!

Junior Heifer, Steer and Market Heifer Jackpot Shows
Trade Show and Youth Judging Contest



MJ
AJE/HS/MBCC Hope Floats



Sandeen Upper Class 2386 -
reference sire

1

Hope Floats x Upper Class

Proj EPDs

CE: 7	BW: 2.5	WW: 66	YW: 98	MCE: 8
Milk: 30	MWW: 63	MRB: 0.32	REA: 0.73	API: 113



Sandeen Upper Class 2386

Mr NLC Upgrade U8676

Sandeen Donna 7386

STF Montana Black KF25

AJE/HS/MBCC Hope Floats

JF Ebonys Joy 479P

3 Embryos Guaranteeing 1 Pregnancy

- Selling 3 embryos guaranteeing 1 pregnancy on each set if work is performed by a certified embryologist.
- Here is an opportunity that may never come around again, the opportunity to purchase embryos from the great Hope Floats. Hope has become a powerhouse donor for us producing a line of show winners and keeper pen cattle that are second to none. Hope has an exceptional ability to transmit her greatest qualities. No matter the way she has been mated there are some things that remain constant; soundness, length, and style. Hope creates quite possibly the most flexible and structurally correct progeny that we have ever had the pleasure of working with. Hope progeny have recently topped sales and shows across the country starting in Louisville last fall with TNGL Hope's Design A589 being named reserve calf champion as a May calf. Hopes Design then went on to command top dollar at \$28,000 in Denver going to Hudson Pines. Another daughter, TNGL Hope'N and Dreamin, went to another top notch breeder in Circle M Farms of Rockwall, TX for \$9,000. Those two females being the only Hope Floats daughters we have ever sold. A son, TNGL Grand Fortune, was just recently crowned Grand Champion bull in Denver along with another brother, TNGL Pave The Way, being named calf champion. Pave the Way is now owned in partnership with Hudson Pines Farm of New York. Now you have the chance to buy some of the most fresh and promising genetics in the breed. This mating with Upper Class is sure to be a great one given the proven powerhouse cows laced through the pedigree. Buy in with confidence that there is longevity and profitability in this once in a lifetime offer.

- Tingle Farms





CLRWTR Sheza Star U902B - reference dam



BC Eagle Eye - reference sire



W/C United - reference sire



MMF Sheza Sassy Gal X902 - reference dam



Mr NLC Upgrade U8676 - reference sire

2A

CLRWTR Sheza Star Embryos

BC Eagle EYE Proj EPDs

CE: 9	BW: 1.4	WW: 64	YW: 104	MCE: 4
Milk: 24	MWW: 56	MRB: 0.36	REA: 0.78	API: 127

2B

W/C United Proj EPDs

CE: 11	BW: 1.7	WW: 77	YW: 120	MCE: 8
Milk: 21	MWW: 60	MRB: 0.30	REA: 0.85	API: 127



HTP SVF In Dew Time

CNS Dream On L186

HTP SVF Honeydew

HC Power Drive 88H

SVF Sheza Star N902

SVF Sheza Lady J900

2 sets of 5 Embryos Guaranteeing 2 Pregnancies

- Selling 2 sets of 5 embryos guaranteeing 2 pregnancies on each set if work is performed by a certified embryologist.
- The donor U902B is doing a great job for Sunset View and 3M Simmental. This In Dew Time donor is super stout behind with muscle and dimension. This donor impresses everyone with her broodness and overall capacity. In the 2013 SVF bull sale a son sold for \$6,600 to Marty Collier. Matter of fact her bulls always seem to be in big demand. U902B is a daughter of Sheza Star however she seems to be making her on mark with her production record. We are offering embryos by the Werning bull United and the Conley bull Eagle Eye for a Sim Angus product. The resulting progeny will be homozygous polled and homozygous black and will a breed leading EPDs.
- **Sunset View Farm**

3A

Sheza Sassy Gal x Upgrade

Proj EPDs

CE: 11	BW: 2.1	WW: 74	YW: 107	MCE: 7
Milk: 26	MWW: 63	MRB: 0.35	REA: 1.02	API: 137



Mr NLC Upgrade U8676

Ellingson Legacy M229

Ms NLC Moho S6119 B

HTP SVF In Dew Time

MMF Sheza Sassy Gal X902

SVF Sheza Unforgettable

3 Embryos Guaranteeing 1 Pregnancy

- Selling 3 embryos guaranteeing 1 pregnancy on each set if work is performed by a certified embryologist.
- We have never been able to retain a daughter of Sheza Unforgettable because of the high demand for her daughters. We finally got to keep a daughter by In Dew Time and she is still one of best on the farm. The progeny of both sexes have been among the high sellers at the Belles of the Bluegrass and the Bulls of the Bluegrass sales. We never dreamed this cow would have made this kind of impact however she is from one of the top donors in the breed today, SVF Sheza Lady. The track record of this family is second to none. Sassy is broody, sound and is the right type and kind. The mating to Upgrade seems to work time and time again. Selling three embryos guaranteeing one pregnancy.
- **Misty Meadows Farm**

3B

Ms Melody M011 x Steel Force

Proj EPDs

CE: 9	BW: 2.6	WW: 62	YW: 98	MCE: 10
Milk: 20	MWW: 51	MRB: 0.08	REA: 0.67	API: 126

**SVF Steel Force S701**

CNS Dream On L186

SVF Sheza Beauty L901

HC Power Drive 88H

HPF Ms Melody M011

Deep Creek Ms 600U H807

3 Embryos Guaranteeing 1 Pregnancy

- Selling 3 IVF Heifer embryos guaranteeing 1 pregnancy on each set if work is performed by a certified IVF embryologist.
- Here is an excellent opportunity to acquire some great top end genetics! Melody has the ability to pass down a consistent quality genetics to her sons and daughters year after year. This is Melody's 10th year in production, and each year her calves get better than the previous year, with the help of outstanding, proven AI Sires. This mating to the most consistent sire, Steel Force S701, will create yet again a great Melody offspring. Steel Force has sired some top selling heifers and bulls. We are very excited with this mating, and wanted to share it with the public. Buy this set of embryos and attach your own prefix with it and generate some revenue. Selling 3 IVF Heifer Embryos sired by SVF Steel Force S701, guaranteeing 1 pregnancy if implanted by a certified IVF Embryologist.
- 4th Meridian Farm, Inc.



HPF Ms Melody M011 - reference dam



Maternal Sib to Embryos

4A

Sheeza Dream x Big Casino

Proj EPDs

CE: 12	BW: 1.9	WW: 68	YW: 100	MCE: 11
Milk: 29	MWW: 62	MRB: 0.05	REA: 0.88	API: 111

**JBS Big Casino 336Y**

RC Club King 040R

JBS Miss Des 301 512N

SRS Franchise F601

CNS Sheeza Dream K107W

Nichols Joliette 107W

3 Embryos Guaranteeing 1 Pregnancy

- Selling 3 IVF embryos guaranteeing 1 pregnancy on each set if work is performed by a certified IVF embryologist.
- Here is an outstanding opportunity to add genetics to your program from one of the most influential females our breed has ever seen. Sired by the ABS baldy bull, Big Casino. From the breed matron, CNS Sheeza Dream.
- Pickrel Farms



CNS Sheeza Dream - reference dam



JBS Big Casino 336Y - reference sire

4B

Bramlets Beautiful x Combustible

Proj EPDs

CE: 10	BW: 2.0	WW: 64	YW: 97	MCE: 9
Milk: 19	MWW: 51	MRB: 0.13	REA: 0.74	API: 124

**FBF1 Combustible**

SVF Steel Force S701

Lazy H Burn Baby Burn R34

HTP SVF In Dew Time

Bramlets Beautiful Z223

HPF Ms Beautiful S054

3 Embryos Guaranteeing 1 Pregnancy

- Selling 3 embryos guaranteeing 1 pregnancy on each set if work is performed by a certified embryologist.
- We selected Bramlets Beautiful at the recent North American sale and WOW, she was even more than we hoped for after arriving in Seward. We have purchased many top females over the years however we are impressed and excited about the future of Beautiful. We elected to flush this female as a virgin heifer and the results were good so we share her future with you the buyer. We feel this donor with hit a home run with Combustible.
- Sloup Simmentals



Bramlets Beautiful - reference dam



FBF1 Combustible - reference sire



KA Freedom X30L - reference dam



TLLC One Eyed Jack - reference sire

Open Heifers



AKP- RP Ms Traveler A001



5 Freedom x One Eyed Jack

Proj EPDs

CE: 4 BW: 3.5 WW: 66 YW: 89 MCE: 7
Milk: 23 MWW: 57 MRB: 0.10 REA: 0.83 API: 90



TLLC One Eyed Jack

Long's Shear Pleasure

Long's Miss Sweet Treat

DHF Jades Dreamworks

KA Freedom X30L

Triple C Krissie L30Y

3 Embryos Guaranteeing 1 Pregnancy

- Selling 3 embryos guaranteeing 1 pregnancy on each set if work is performed by a certified embryologist.
- KA Freedom comes from one of the most prolific cow families in the Simmental breed, Hart Hollywood Queen. Having over 250 registered calves, Queen made her legacy at Triple C Farms being their main donor. This young and powerful female, KA Freedom, is a fancy featured, sound structured individual that is simply powerfully constructed. Being wide based and square hipped the internal dimension that she possesses is phenomenal. Freedom is a maternal sister to KA Independence who has rapidly become one of the leading cows in our breed. This mating with the hottest young Simmy bull out there, One Eyed Jack is a sure fire opportunity to put you in the drivers seat in Simmental genetics.
- KA Cattle & Six Bar R

6 AKP-RP Ms Traveler A001

CE: 8 BW: 1.7 WW: 65 YW: 110 MCE: 8
Milk: 27 MWW: 59 MRB: 0.26 REA: 0.31 API: 107



RP/MP Mo Magic 312X

SC Mo Magic S47

MCLF RP MS Love Me S311

SHS Navigator N2B

HPRP Ms Traveler 079X

JLM Miss Traveler 4058

SimAngus ASA# 2735058 BD: 1/1/13
Tattoo: A001 Adj. BW: 80

- A001 is out of the Mo Magic son out of Love Me. The Love Me S311 continues to excel time and time again. The pedigree and track record is good as it gets at Rocking P. The list of accomplishments in sale and show ring by this family has exceeded our expectations. In the recent Ft Worth sale a granddaughter of S311 commanded \$13,000. A001 is a stout hipped individual that is wide based with loads of internal dimension. If you desire a heifer to show and then follow up being a top notch producer as a cow then A001 should fit the bill. This one is easy to recommend.

- Rocking P Livestock

7 Miss Macho 5A

CE: 1 BW: 3.7 WW: 67 YW: 88 MCE: 8
Milk: 21 MWW: 54 MRB: 0.11 REA: 0.48 API: 85



3C Macho M450 BZ

Meyer Ranch 734

3C Crocus H112 B

LBF/B&D Kodiak K121

Miss Katie 302N

I02K_

3/4 Blood ASA# 2818049 BD: 1/4/13
Tattoo: 5A Adj. BW: 86

- Macho 5A is heifer we are proud to offer in the Ky Expo. 5A's Kodiak dam is one of our best cows and continues to have a marketable calf each year. Here is a heifer with a nice look that is stout boned and has good body length. This will be good cow like her mother plus will make money along the way.
- Jeff Hamilton

8

HPF/KRIZ Reisen A301

CE: 10	BW: 2	WW: 62	YW: 86	MCE: 11
Milk: 19	MWW: 50	MRB: 0.18	REA: 0.69	API: 117



CNS Dream On LI86
 RF Black Jade 950N
 HC Hummer 12M

Oval F Reisen R588

OVAL F Nikki N43I

Purebred	ASA# 2735375	BD: 1/2/13
Tattoo: A301	Adj. BW: 85	

- A301 is long necked, good hipped daughter of the popular Eisen R588 donor that has produced several high selling progeny for HPF and Kriz Cattle Co in the past Living Legacy sales. A301 combines the Reisen bloodlines with RF Black Jade, one of the most potent 3/4 blood donors of all time. This female should be extremely competitive in the showing and with the cow families she got behind her, there's no doubt she will be consistent in production.

- Hudson Pines Farm



HPF/Kriz Reisen A301



Oval F Reisen R588 - reference dam

9

Images Party Princess

CE: 7	BW: 2.2	WW: 53	YW: 75	MCE: 9
Milk: 23	MWW: 49	MRB: 0.14	REA: 0.64	API: 106



K-LER Make It Rain
 Foundation 724N
 HCC/CSC Beyonce
 CNS Dream On LI86

DANR Party On

DANR Lethal Dazzler

Purebred	ASA# 2807331	BD: 1/12/13
Tattoo: 610A	Adj. BW: 80	Adj. WW: 517

- Party Princess is a solid black long bodied female that is super sound in her movement and extended through her front. This prospect is a deep sided, nicely balanced female with a sound structure. She has the potential to work in any type of breeding program. This female is out of the popular K-LER Make It Rain bull and one of the most productive cows. This cow has a track record that produced the Grand Champion Open Show heifer at the Indiana State Fair in 2011 and the fifth overall bred and owned female at the Simmental Junior Nationals in Lima, Ohio in 2012. This female has the potential to be better than her mother. You can buy with confidence when purchasing this heifer.

- Double Image Cattle Co.



Images Party Princess

10

NB Chyna's Intuition 63A

CE: 9	BW: 2.9	WW: 79	YW: 122	MCE: 8
Milk: 26	MWW: 65	MRB: 0.41	REA: 0.86	API: 126



TNT Tuition U238
 S A V Final Answer 0035
 TNT Miss S68
 MR NLC Upgrade U8676

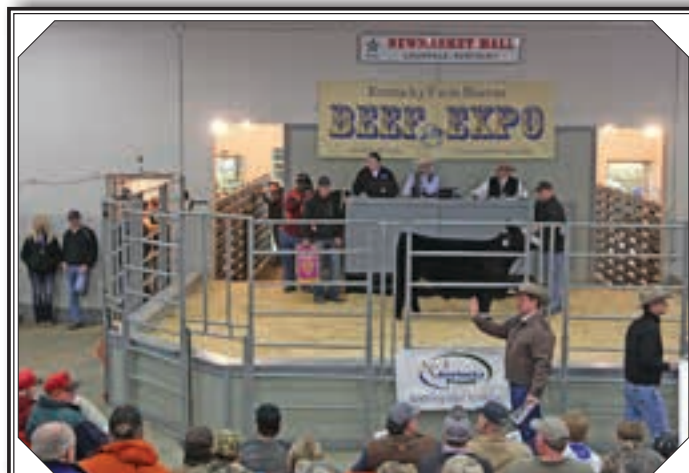
NB Grade A Chyna 63Y

Double D Blk Chyna

3/4 Blood	ASA# 2803166	BD: 2/3/13
Tattoo: 63A	Adj. BW: 84	Adj. WW: 689

- This big bodied, big footed and sound granddaughter of Double D Blk Chyna has an attractive front an excellent set of EPDs. Sired by Tuition, there are a lot of mating possibilities.

- Neal Bros. Simmentals





HPF Miss Pep A316

WW Miss Pep 58N -
reference dam



11

HPF Miss Pep A316

CE: 6 BW: 1.6 WW: 58 YW: 90 MCE: 6
Milk: 21 MWW: 50 MRB: -0.15 REA: 0.71 API: 86



Yardley High Regard W242

Yardley Impressive T371

Miss Yardley T68

PVF-BF BF26 Black Joker

WW Miss Pep 58N

Miss Pep 58H

Purebred

ASA# 2735390

BD: 1/22/13

Tattoo: A316

Adj. BW: 72

- The Miss Pep family has arguably been one of the most influential cow families in the history of Hudson Pines. Time and time again she produces cattle that are stout made, big centered, with the eye appeal that it takes to be competitive in the showing. A316 is no exception and we feel may be one of the better ones 58N has produced. This female was a little behind earlier on, coming off a below average recipient. She has more than caught up now and is surpassing her contemporaries. Take a look here, we think this heifer has a lot of potential when you put a leather halter over her ears.
- Hudson Pines Farm

12

YSC/NBA Zoey

CE: 5 BW: 5.7 WW: 54 YW: 72 MCE: 7
Milk: 18 MWW: 45 MRB: 0.06 REA: 0.4 API: 84



Harkers/JS Domination

STF Dominance T171

GCF Miss Caliente

GB Dreamline 54S

YSC Sophie W20

RF Cloee 20P

Purebred

ASA# 2752738

BD: 2/10/13

Tattoo: A20

Adj. BW: 79

Adj. WW: 671

- This heifer is built from the ground up with a huge foot, bone, perfect leg set and all the pretty you could put in one. Along with a sweet disposition she is great ribbed, long necked, long spined and big topped.
- Young Show Cattle



YSC/NBS Zoey

13

HPF Sazerac A330

CE: 3 BW: 3.4 WW: 55 YW: 78 MCE: 9
Milk: 18 MWW: 46 MRB: 0.11 REA: 0.41 API: 94



Mack AF W273

STF Dominique R170

MISS Thunder PineS273

Meyer Ranch 734

Myers Queen Sazerac P94

Myers Traveling Queen M212

3/4 Blood

ASA# 2730860

BD: 2/21/13

Tattoo: A330

Adj. BW: 74

- This 3/4 blood Sazerac daughter is the kind a guy needs to have 100 of and you would be set for life in the cattle business. Perfect structured, moderate framed, sappy middled, with balanced and style to boot. I should write pages on the value of Sazerac and her daughters, but don't worry, I won't add in an outcross sire on the top side and value of A330 keeps rising. Dream On free pedigree with a big time cow family and the look to match; not much else needs said.
- Hudson Pines Farm



HPF Sazerac A330

Myers Queen Sazerac P94
- reference dam



14

Images Christy Girl

CE: 16 BW: -1.9 WW: 47 YW: 67 MCE: 11
 Milk: 29 MWW: 53 MRB: -0.01 REA: 0.64 API: 133



FBFS Warsaw 068W

JS Sure Bet 4T

FBFS Slow Melt 089S

SS Undreamabull R308

Images Annas Dreamgirl

Clear Water Acesannan 101

Purebred ASA# 2807332 BD: 2/24/13
 Tattoo: 101A Adj. BW: 67 Adj. WW: 616

- Here is your opportunity to purchase a combination heifer that will work on the tanbark and then be a definite asset for a front pasture breeding piece. This black female is big middled, thick topped individual that has plenty of bone and style to burn. The FBFS Warsaw 069W bull has done his part as a herd sire to produce these desirable females, the dam goes back to the highly prototypically. A maternal sister was the Reserve Grand Open Simmental female at the 2010 Indiana State fair. Make sure you analyze her outstanding numbers. You definitely need to look her up on sale day.

- Double Image Cattle Co.



Images Christy Girl

15

TNGL High Mark A549

CE: 10 BW: 2.1 WW: 71 YW: 105 MCE: 10
 Milk: 28 MWW: 53 MRB: 0.3 REA: 0.7 API: 128



MR NLC Upgrade U8676

Ellingson Legacy M229

Ms NLC Mojo S6119 B

STF Montana Black KF25

DST Hi-Lite T217

DST Hi-Lite N62

Purebred ASA# 2768990 BD: 2/27/13
 Tattoo: A549 Adj. BW: 80

- High Mark A549 is a beautiful blaze faced female with loads of upside. She is bold sprung through the center portion of her body with lots of expression carried through her stifle. A549 is out of our leading red donor, Hi-Lite T217, which is a consistent producer of high capacity, high performing stock that we like to put back in to our herd. High Mark possesses an extraordinary set of numbers ranking in the top 20% of the breed in nearly every category. Adding to her genetic profile is an out-crossed pedigree that is extremely versatile. High Mark will be competitive this summer and profitable as a cow, study hard here!

- Tingle Farms



TNGL High Mark A549

16

Welsh's Sweet Dixie 168A

CE: 9 BW: 3 WW: 63 YW: 95 MCE: 9
 Milk: 24 MWW: 55 MRB: 0.13 REA: 0.76 API: 111



JM XI That's Right

SVF Stonehenge R95

JM Miss Olivia-L36

Brooks Above Par

GCF Sweet Dixie T54

NJC Ebony Antoinette

Purebred ASA# 2805781 BD: 3/1/13
 Tattoo: 168A Adj. BW: 83 Adj. WW: 550

- Well, we are extremely pleased with the progeny out of our herd bull, JM That's Right. 168A is a favorite among many visitors. Sweet Dixie is complete, smooth and correct from end to end. 168A is neat designed and has very few holes. The pedigree is complete also, being out of Olivia and Stonehenge on the top side and Above Par and Ebony Antoinette on the bottom side. Sweet Dixie is a fancy baldie show heifer with potential to be a contender in the green shavings however her place is really a future breeding piece.

- Welsh Simmetals



Welsh's Sweet Dixie 168A



SBC Miss Eternity 316

17

S B C Miss Eternity 316

CE: 9 BW: 0.5 WW: 61 YW: 101 MCE: 7
 Milk: 22 MWW: 53 MRB: 0.16 REA: 0.38 API: 107



Yardley High Regard W242

Yardley Impressive T371

Miss Yardley T68

S A V 8180 Traveler 004

HB Blackcap 721T

Three Trees Blackcap 2143

SimAngus ASA# 2814407 BD: 3/15/13
 Tattoo: A316 Adj. BW: 78 Adj. WW: 656

- This March High Regard daughter is an excellent show heifer prospect for the Junior Nationals that will be here in Kentucky this July. This heifer is easy moving, long bodied and neat made in her overall design. This is our first time being a part of the Kentucky Beef Expo and we want to bring one of our best. Another strong and positive factor is her Angus dam that is a good one.

• **Stephens Beef Cattle**



WLE Magnitude A80

18

WLE Magnitude A80

CE: 12 BW: 0.1 WW: 62 YW: 87 MCE: 6
 Milk: 18 MWW: 49 MRB: 0.25 REA: 0.53 API: 118



WLE Uno Mas X549

CNS Dream On L186

Shawnee Miss 770P

O C C Magnitude 805M

Zeis Magnitude X80

Zeis Miss Zel U448

3/4 Blood ASA# 2754664 BD: 3/18/13
 Tattoo: A80 Adj. BW: 74 Adj. WW: 806

- It doesn't happen every day that the serious junior showman and the serious breeder can land on the same one. This heifer makes that happen. The 2014 Simmental Junior Nationals is set to be held here in Louisville and this heifer is sure worthy of the trip back come summer. Uno Mas worked like a dream for us and this heifer got all of the goods. Feminine, sound structured, sweet dispositioned and good looking are some descriptors to get you started. Her mother, purchased from Dave Zeis, is making steady strides at WLE; her first calf was purchased by Hudson Pines Farms out of the 2013 Factory Direct Sale. Be sure to look up this fundamental breeding piece that has all of the bells and whistles to compete in the ring if you so choose.

• **Wesner Livestock**



Welsh's Mindy 172A

19

Welsh's Mindy 172A

CE: 11 BW: 0.7 WW: 53 YW: 80 MCE: 14
 Milk: 31 MWW: 58 MRB: 0.1 REA: 0.91 API: 118



JM XI That's Right

SVF Stonehenge R95

JM Miss Olivia-L36

Nichols Legacy G151

Welshs Maggie 06N

CEZS Black Mindy

Purebred ASA# 2805774 BD: 3/18/13
 Tattoo: 172A Adj. BW: 70 Adj. WW: 627

- Here is grand daughter of the Swains matriarch and legendary Mindy. Actually CEZ Mindy was purchased by Swains Select and Jeff Coomer many years ago at the Ky Beef Expo. 172A is a striking baldie female that is powerfully constructed being big bone and big footed. This March born female is level and wide hipped plus strong topped. Another female out of our herd sire That's Right, the Stonehenge Olivia son. If you want a female with a look and complete design look up Mindy 172A.

• **Welsh Simmetals**



JM XI That's Right - reference dam

20

YSC/NBA Blazin

CE: 9	BW: 1.8	WW: 71	YW: 102	MCE: 8
Milk: 28	MWW: 63	MRB: 0.31	REA: 0.74	API: 126



MR NLC Upgrade U8676

Ellingson Legacy M229

Ms NLC Mojo S6119 B

PARTI Boy 6141S

B&K American Blaze

Triple C Ms America P629

Purebred	ASA# 2752739	BD: 4/2/13
Tattoo: A19	Adj. BW: 68	Adj. WW: 736

- I'm all about a show heifer, but I want the kind that's going to be a cow when it's all said and done. We can't emphasize enough the importance of cow power. Blazin' has that and then some! With the granddam of Triple C America, a great granddaughter of Hollywood Queen and a sire of Upgrade, Blazin' is right up that alley. She has internal dimension, a sweet front and is as sound as a cat. Blazin' will make a great prospect for anyone on any level.

- Young Show Cattle



YSC/NBA Blazin

21

NB Pure Anne 75A

CE: 8	BW: 0.7	WW: 64	YW: 105	MCE: 8
Milk: 32	MWW: 64	MRB: 0.43	REA: 0.43	API: 115.5



MCATL Pure Product 903-55

Connealy Final Product

M A Esta 55-252

Dillons K217 Black Dream

NB Dreamboat Anne 5U

NB Pocahantas 14D

SimAngus	ASA# 2803165	BD: 4/10/13
Tattoo: 75A	Adj. BW: 74	Adj. WW: 633

- Super attractive daughter of 5U. Really nice fronted, big ribbed and sound with a splash of white on her head. Maternal sisters topped the Tennessee Fall Showcase and Good Girls sale!

- Neal Bros. Simmentals



NB Dreamboat Anne 5U - reference dam

22

Welsh's Olivia 175A

CE: 11	BW: 2.3	WW: 72	YW: 107	MCE: 13
Milk: 20	MWW: 56	MRB: 0.16	REA: 0.89	API: 130



JM XI That's Right

SVF Stonehenge R95

JM Miss Olivia-L36

CNS Dream On L186

Welshs Rosie 102W

Welshs Night Lights 58S

Purebred	ASA# 2805782	BD: 4/26/13
Tattoo: 175A	Adj. BW: 79	Adj. WW: 753

- Here is cow power and show power all rolled into one package and that is Olivia 175A. With visitors to the farm actually many picked out different females out of That's Right. This female is backed by Welsh Rosie and our donor Night Lights. We feel no doubt this beautiful female will be a productive future donor for some program. 175A has a great pedigree and breeding EPDs across the board. If you want a female with some base width, capacity, and stoutness plus looks the part then make it to the Ky Expo for a true breeding piece.

- Welsh Simmetals



Welsh's Olivia 175A



Welsh's Starlet 176A

23

Welsh's Starlet 176A

CE: 12 BW: 1.1 WW: 59 YW: 74 MCE: 13
 Milk: 21 MWW: 51 MRB: 0.02 REA: 0.76 API: 120



Welshs Dew It Right 067T

HTP SVF In Dew Time

SVF/NJC Senerita N29

SVF/NJC Amazon

Welshs Roxie 103W

SVF/NJC Crown Jewel R155

Purebred ASA# 2802506 BD: 5/1/13
 Tattoo: 176A Adj. BW: 73 Adj. WW: 667

- Starlet is the sired by the past high seller at the Bulls of the Bluegrass and Accelerated Genetics bull, Welsh Dew It Right. We are proud to raise a bull of the caliber of Dew It Right and super proud of offer a daughter such as Starlet. 176A is a definite standout that deserves your strong consideration. Starlet is a female that is complete in many ways being attractive thru her front end and smooth thru her shoulder. 176A is deep flanked with rib and capacity. This Dew It Right has a great rear leg and is sound structured. Starlet full sister, Sapphire sold in the 2012 Tn Agribition for \$4,400 to JRW and last year in the 2013 Agribition a flush was sold on Sapphire was commended \$5,750 selling to Krieger Farms. The Roxie cow is sired by Amazon out of our lead donor SVF NJC Crown Jewell. We are Kentucky Proud.
- Welsh Simmetals

24

Miss Flat Rock A392

CE: 13 BW: 1.1 WW: 54 YW: 80 MCE: 8
 Milk: 20 MWW: 47 MRB: 0.46 REA: 0.47 API: 131



STF Fix It YU22

STF Fixation WI55

STF Miss SF US22

Bon View New Design 878

Flatrock 156

Flatrock 956

SimAngus ASA# 2818662 BD: 6/18/13
 Tattoo: A392 Adj. BW: 83

- Here is a superb future cow prospect by the Fit It son out of a broody 878 Angus cow. Here is a summer born that will be a nice project for some Jr member. A392 is strong for calving ease and API. Look her up at the expo. This powerhouse's dam Flat Rock 156 was a class winner at the North American.
- Flat Rock Farms

25

Miss Flat Rock 371A

CE: 9 BW: 3.4 WW: 58 YW: 78 MCE: 6
 Milk: 17 MWW: 46 MRB: 0.2 REA: 0.67 API: 108



STF Fix It YU22

STF Fixation WI55

STF Miss SF US22

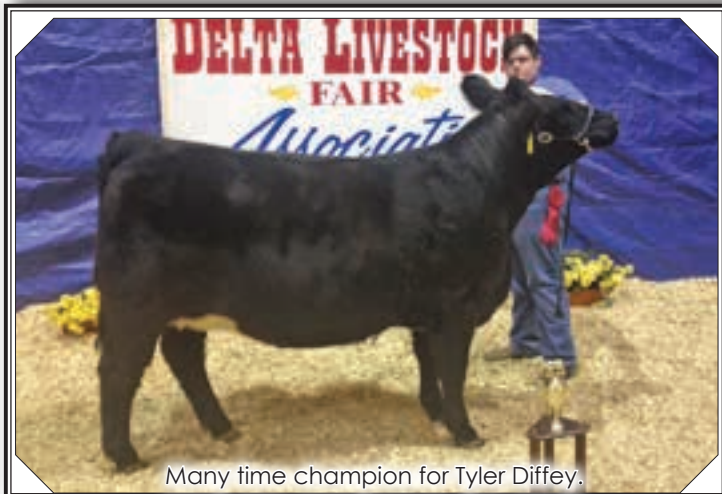
LBS Tne Foreman 702T

Miss DRT Yelana 71Y

RS Dream Girl I6R

Purebred ASA# 2818661 BD: 5/15/13
 Tattoo: 371A Adj. BW: 84

- Here is a daughter of the Fix It and a special one. 371A is a stout boned female that offers thickness on a wide base. This is a May heifer that will show in a different division and should be highly competitive at the Jr Nationals. 371A's dam was champion Simmental at the Scarlet and Gray.
- Flat Rock Farms



Many time champion for Tyler Diffey.

26 Ms MLH Mercedes 666A

CE: 9 BW: 0.8 WW: 65 YW: 97 MCE: 8
 Milk: 23 MWW: 55 MRB: 0.25 REA: 0.52 API: 122



Rubys Wide Open 909W

LBS The Foreman 702T

Rubys Miss Cleo S601

ER K33B

GLS Miss 33R X139

STR 4003 Sophia S625

Purebred ASA# 2741857 BD: 5/17/13
 Tattoo: 666A Adj. BW: 77

• Here is a May heifer calf out of our sensational outcross donor that has rung the cash register since being in production. This soft and stout calf by Wide Open is evidence of why the sire and dam are experiencing such momentum. Perfect for this years Jr National in Louisville and also eligible for double premiums at the Sweepstakes that is being held in conjunction. She travels with style and ease that will garner the banners in the show ring and destined for great rewards in the breeding pen.

- Maple Leaf Farm



Hatmaker
Ms MLH Mercedes 666A

27 Four F Star Bright A149

CE: 8 BW: 1.8 WW: 55 YW: 71 MCE: 7
 Milk: 18 MWW: 45 MRB: 0.14 REA: 0.51 API: 104



MEF Lucky Man 7 Y622

Welshs Dew It Right 067T

HILCO Grand Lady 0805U

JF BH Choice Plus 909J

SS Brite Eyed Lass S211S

1211

3/4 Blood ASA# 2819891 BD: 5/20/13
 Tattoo: A149 Adj. BW: 71

• This is our first time being a part of the Ky Expo sale. Here is a special late May heifer that we feel will be a show stopper. A female backed by Jeff Welsh's Dew It Right and a Choice Plus cow. Star Bright is stylish being long and feminine thru her front end. A female this good footed with some bone plus is wide hipped with good base width. She has the look and great disposition.

- Four F Farms



Seedling Wilson
Four F Star Bright A149

28 AK/NDS Miss Confussion

CE: 9 BW: 2.6 WW: 69 YW: 102 MCE: 10
 Milk: 16 MWW: 50 MRB: 0.12 REA: 0.72 API: 127



SVF Steel Force S701

CNS Dream On L186

SVF Sheza Beauty L901

CNS HFS Day Dreamer

LMCS Delightful Dream

JARR Miss Salutation 33T

Purebred ASA# 2795629 BD: 8/2/13
 Tattoo: 1345A Adj. BW: 76

• We have shown 3 maternal sibs in the last 2 years and all have been in the top 10 at the National Classics and a full sister was one of our top show heifers winning numerous shows and also placing in the top 20 at Nationals. Her dam is a past reserve division winner at the NAILE and now one our top donors averaging 28 eggs per flush. This heifer is like her siblings and will be as competitive. She combines 2 of the top cows in the breed- Perfection and Beauty in one pedigree!

- AK/NDS Simmentals



Miss Confussion full sib



LMCS Delightful Dream
- reference dam

29 **Four F Lucy Mae A150**

CE: 7 BW: 4.2 WW: 67 YW: 101 MCE: 7
 Milk: 16 MWW: 50 MRB: 0.05 REA: 0.57 API: 107



FBFS Wheel Man 649W

SVF Star Struck S199

SVF Steel Force S70I

NLC Fortunate Son 100N

SVF Reddy Or Not U610

SVF Reddy Or Not M600

Purebred

ASA# Pending

BD: 8/28/13

Tattoo: A150

Adj. BW: 76

- Here is one to catch your attention. We feel this heifer has lots of quality and potential. This youngster has a great pedigree backed by some top notch animals on both sides of the family tree. A150 is young however is stout and performance oriented. This female has a stout rear and top. If you don't find this one sale day, her dark red color will find your eyes.

- **Four F Farms**

30 **MS MLH High Desire 338A**

CE: 14 BW: -0.5 WW: 69 YW: 107 MCE: 8
 Milk: 17 MWW: 51 MRB: 0.36 REA: 0.73 API: 136



SS/PRS High Voltage 244X

HTP/SVF Duracell T52

KenCo Miley Cottontail

Connealy Danny Boy

Vermilion Blackbird 5832

Vermilion Blackbird 320I

SimAngus

ASA# 2808372

BD: 9/2/13

Tattoo: 338A

Adj. BW: 73

- This lovely September by High Voltage has been a early stand out she processes the style, impeccable structure, capacity and spring of rib that is demanded in the show ring and donor pen. Her outstanding attributes are no surprise as a full brother was a top selling bull at the North American Select sale at \$5,500, a paternal fall heifer sib last year commanded \$5,400 at the expo, and maternal sibs have top the Belles and Bulls of the Bluegrass sales. Cooper has this one ready for competition, it will be fun with this girl. KY Proud.

- **Maple Leaf Farm**

31 **Miss Lady 10A**

CE: 12 BW: 2 WW: 65 YW: 89 MCE: 9
 Milk: 22 MWW: 55 MRB: 0.15 REA: 0.65 API: 113



MR Low Rider 38W

ACCI Hustler 2N

JDJ Kerosene 38SM

RC Club King 040R

Miss Lady 10X

Welshs Ladys Time 64T

Purebred

ASA# 2818053

BD: 9/20/13

Tattoo: 10A

Adj. BW: 77

- Here is a young one that is fancy and stylish. This fall born is sired by our junior herd sire, Low Rider out of the past show heifer JDJ Kerosne. Lady's dam is doing a great job. Don't over look this one she will look great this summer at the AJSA Junior Nationals.

- **Jeff Hamilton**



Four F Lucy Mae A150



Ms MLH High Desire 338A

DVAuction
 Broadcasting Real-Time Auctions

Never Miss An Auction Again!
 Watch & Bid online for FREE!

Visit www.DVAuction.com
 and Register Today!

For General Questions Please Contact Our Office:
 (402) 316-5460 or support@dvauction.com

32 AK/NDS Promising Future

CE: 11 BW: 2.1 WW: 60 YW: 78 MCE: 10
 Milk: 21 MWW: 51 MRB: 0.09 REA: 0.87 API: 113



AK/NDS Trade Show XW06

GWS Ebonys Trademark 6N

AK/NDS Dreamin`n`Wishin`

Remington Red Label HR

STF/RP Sweet Susan

MMP Kiss This 37L

Purebred ASA# 2796241 BD: 10/4/13

Tattoo: 1401A Adj. BW: 74

- Promising Future is our best fall heifer. A cherry red heifer that has the show ring look and plenty of style to be at the top at any level show. She is sound footed with the extra rib capacity and remains clean and extended through her front third. Her dam is a maternal sister to Dominance. Her sire was Reserve Champion Bull at the Dixie National. We have showed several maternal sisters to Promising Future. After a competitive show career she will make a tremendous cow.

- AK/NDS Simmentals



STF/RP Sweet Susan - reference dam

33 TNGL Madison Z469

CE: 6 BW: 3 WW: 81 YW: 120 MCE: 7
 Milk: 33 MWW: 73 MRB: 0.35 REA: 0.96 API: 117



MR NLC Upgrade U8676

Ellingson Legacy M229

MS NLC Mojo S6119 B

STCC Sheriff Taylor

STCC Taylor Dreams 063X

STCC Dreams 349U

3/4 Blood ASA# 2654904 BD: 5/3/12

Tattoo: Z469 Adj. BW: 79 Adj. WW: 881

- Madison Z469 is a bred that should be going back in to our keeper pen. She possesses one of the more unique out-crossed pedigrees that we have to offer, while carrying an EPD profile that is second to none. Madison is an ultra complete female. She is really good from the ground up. She lays very nice in her shoulder and fore rib and carries plenty of dimension through the center portion of her body. She sells bred to the 2014 Denver Champion bull, TNGL Grand Fortune. We are very excited to see what this mating has in store for its new owners, it will also be one of the first calves from Grand Fortune to hit the ground! A tremendous future in this female and the calf she is carrying, buy with confidence!

- Ald to TNGL Grand Fortune, ASA# 2654876 on 8-16-13.

- Tingle Farms



TNGL Madison Z469

34 CLRWTR Kesha Z023

CE: 8 BW: 2 WW: 77 YW: 119 MCE: 11
 Milk: 20 MWW: 58 MRB: 0.22 REA: 0.56 API: 118



TJ Sharper Image 809U

Dikemans Sure Bet

T J Miss Bando S27

SVF Steel Force S701

CLRWTR Tik Tok W423C

Zeis Miss Drive N423

3/4 Blood ASA# 2710508 BD: 9/12/12

Tattoo: Z023 Adj. BW: 84 Adj. WW: 772

- Here is your opportunity to purchase genetics from the heart of our program. Her dam CLRWTR Tick Tok as a fall heifer calf was select as the Grand Champion female at the 2010 Kentucky State Fair Open show and Kesha herself was the 10th overall % heifer at the 2013 Eastern Regional Junior show. This cow family stemming from the productive Zeis Miss Drive N423 has predictability written all over it. Not only is she easy on the eyes but her EPD profile is quite good also. This female comes serviced to our NAILE and Denver Champion Angus bull, Northern Light. This should be an outstanding percentage calf.

- Ald to Dameron DDA Northern Light., AAA# 17294559 on 1-12-14.

- Clear Water Simmentals



CLRWTR Tik Tok W423C - reference dam

CLRWTR Kesha Z023





MS SBC Sweet Heart 301Z

35 MS SBC Sweet Heart 301Z
 CE: 7 BW: 2.7 WW: 60 YW: 99 MCE: 5
 Milk: 21 MWW: 51 MRB: 0.18 REA: 0.23 API: 94



SHS Navigator N2B

TCF/RCC Temptation GJ640

Rocky Hills Jo

Boy New Day 8005

Finks Miss 4028 1131 ND

Finks Miss 1131 4168 RT

SimAngus ASA# 2699221 BD: 9/21/12
 Tattoo: 301Z Adj. BW: 78 Adj. WW:

- As first time consignor we glad to be a part of the Simmental breed in Kentucky. We have assembled some outstanding Angus cows over the past several years and are extremely pleased with addition and results of our Sim Angus. This Sim Angus is out of super New Day x Right Time cow that come from Finks. Sweetheart is truck of female being wide based, deep with loads of capacity and rib. We have been impressed with the Navigator daughters and we feel this is a good one. This broody female will make a tremendous cow and has been bred to the exciting STF Royal Affair.

- Ald to STF Royal Affair, ASA# 2639758 on 1-18-14.

- Stephens Beef Cattle



MMF Savannah Z50

36 MMF Savannah Z50
 CE: 13 BW: 0.8 WW: 73 YW: 105 MCE: 12
 Milk: 30 MWW: 66 MRB: 0.4 REA: 1.07 API: 151



MR NLC Upgrade U8676

Ellingson Legacy M229

Ms NLC Mojo S6119 B

CNS Dream On L186

BPCC Savannah Shay 137T

Triple C Shesavannah K137

Purebred ASA# 2720653 BD: 10/3/12
 Tattoo: Z50 Adj. BW: 81 Adj. WW: 590

- We always like to support the Ky Beef Expo Simmental sale. In selecting a female to consign we always want to sell one we would want to buy and be the right type and kind. This female is definitely the brood cow and one that could have your next herd bull. Z50 is moderate in her frame plus deep and wide. It sure looks like this grand daughter of the Triple C Savannah is going to an easy keeper along the way. This Upgrade daughter is one we should be keeping however are commitment remains the same even though we are small breeders. Z50 is stacked with breed leading EPDs and has an API of 151. Actually 13 EPDs are in the top 25% or better. This broody female has been serviced to LMF Revenue, a new Genex bull which is a son of IR Expedition out of a KS Baxter that is homo polled and homo black.

- Ald to LMF Revenue Z24, ASA# 2670825 on 1-08-14.

- Misty Meadows Farm



WLE Uno Mas - reference AI sire

37 RP/MP Magic Love 077Z
 CE: 8 BW: 2.3 WW: 66 YW: 103 MCE: 9
 Milk: 24 MWW: 57 MRB: 0.12 REA: 0.51 API: 104



HPF On Demand X952

HTP SVF In Dew Time

BCS Queen Of Hearts

SC MO Magic S47

RP/MP Magic Love 073W

MCLF RP Ms Love Me S311

3/4 Blood ASA# 2779908 BD: 10/4/12
 Tattoo: 077Z Adj. BW: 87 Adj. WW: 734

- This HPF On Demand daughter is a big time cow prospect. She has the power in her blood to continue the maternal side of her pedigree. 077Z has a tremendous amount of internal dimension and functionality. Not only will this heifer make a cow, but she will be very competitive in the 2014 show season as a senior yearling. Her Uno Mas calf will make this a very wise investment.

- Ald to WLE Uno Mas, ASA# 2532016 on 12-28-13.

- Rocking P Livestock

38**ESF Mr Authority**

CE: 6 BW: 5.2 WW: 53 YW: 71 MCE: 7
 Milk: 20 MWW: 47 MRB: 0.08 REA: 0.17 API: 85

**Harkers/JS Domination**

STF Dominance T171

GCF Miss Caliente

SVF/NJC Built Right N48

RP/MP Right To Love 015U

PCC Queens Valentine R9

Purebred

ASA# 2745037

BD: 9/15/12

Tattoo: Z18

Adj. BW: 85

Adj. WW: 603

• This docile Right to Love son is extremely big bodied, heavy structured and smooth patterned. Mr. Authority is a heavy muscled and high performing bull that you will love how he handles himself in motion. His mother is a lead donor at Hudson Pines and she has done an extremely good job producing high quality cattle. Set your standards high with this bull as I expect the same out of him.

- Edwards Simmental Farms



ESF Mr Authority



RP/MP Right to Love 015U-reference dam

39**NB Bonnie's Fortune 30Z**

CE: 9 BW: 1.8 WW: 55 YW: 79 MCE: 11
 Milk: 26 MWW: 54 MRB: 0.29 REA: 0.36 API: 125

**SVF NJC U003**

NLC Fortunate Son 100N

NJC Ebony Antoinette

BAR CK Bull Dozer 429M

NB Bonie Lou 30P

NB Betty Lou K3

Purebred

ASA# 2722201

BD: 10/31/12

Tattoo: 30Z

Adj. BW: 84

Adj. WW: 658

• Big butted, big nuted, big ribbed, with a big foot & clean joints! This fall bull is ready to go! The fertility and disposition of the U003 Bulls has been excellent! Dream On free pedigree! Semen tested.

- Neal Bros. Simmentals

40**AK/NDS Written-N-Stone**

CE: 10 BW: 2.5 WW: 87 YW: 122 MCE: 10
 Milk: 11 MWW: 55 MRB: 0.09 REA: 0.67 API: 131

**JF Milestone 999W**

TNT Top Gun R244

MS Maxie Lou MI 12S

HTP SVF In Dew Time

BPCC Bobbi Dillon 192W

EBS Shesa Bobbi

Purebred

ASA# 2691205

BD: 11/2/12

Tattoo: 1264Z

Adj. BW: 81

• Written-N-Stone is a wide based bull with the depth and remains sound footed. His dam is one of our top donors and her progeny have been among our best. He combines some of the breeds top maternal genetics into one pedigree.

- AK/NDS Simmentals

41**AK/NDS Stonewall**

CE: 6 BW: 3.5 WW: 85 YW: 119 MCE: 8
 Milk: 10 MWW: 53 MRB: 0 REA: 0.6 API: 115

**JF Milestone 999W**

TNT Top Gun R244

MS Maxie Lou MI 12S

CNS HFS Day Dreamer

LMCS Delightful Dream

JARR Miss Salutation 33T

Purebred

ASA# 2691202

BD: 11/5/12

Tattoo: 1276Z

Adj. BW: 79

• A top yearling son of Milestone. This mating is one of the best matings we have had to date. A full sister was campaigned this past summer by Andy and received 10th overall bred and owned honors at the National Classic. A full brother has been selected several times champion steer and another full sister sold last spring and has been shown successfully. Stonewall is long sided with tremendous bone and extremely athletic.

- AK/NDS Simmentals



JF Milestone 999W



Kriegers Red Pearl Z322

42 Kriegers Red Pearl Z322

CE: 8 BW: 3.8 WW: 63 YW: 94 MCE: 8
 Milk: 24 MWW: 55 MRB: 0.12 REA: 0.59 API: 103.2



THSF Black Pearl

THSF Mr Precise 456P

THSF 433P

LF Dream Doctor

PRS Southern Wonder W311

PRS Daisy Duke

3/4 Blood

ASA# 2740899

BD: 11/17/12

Tattoo: Z322

Adj. BW: 77

- If anyone has been to a Krieger production sale you have seen the impact of Black Pearl, his progeny are the consistent standouts. Here is a son that is deep bodied and full of red meat. Z322 is fall herd sire that is ready to do his job. Z322 is stout throughout his rear quarter and super deep bodied and bold sprung. If you want a herd sire and retain females then this guy is for your program. This fall yearling had a low birth weight of 77 lbs.

- Krieger Farms



Kriegers Pearl Z29

43 Kriegers Pearl Z29

CE: 7 BW: 3.4 WW: 66 YW: 91 MCE: 9
 Milk: 27 MWW: 60 MRB: 0 REA: 0.75 API: 105



THSF Black Pearl

THSF Mr Precise 456P

THSF 433P

3C Macho M450 BZ

Miss CCF Joy U29

JF Ebonys Joy 4131P

Purebred

ASA# 2740897

BD: 12/4/12

Tattoo: Z29

Adj. BW: 75

- Z29 is a royally bred herd sire with potential as a great breeding bull. Pearl Z29 is Pearl son out a Macho Joy daughter. This fall yearling has the all the pieces to be a top performance sire. As a individual Z29 offers muscle mass, rib and capacity, and body length. This Black Pearl son has done well in the show ring and has been a member of the winning get of sire several times. If you are looking for a true breeding bull and sell your calves by the pound then Pearl Z29 will be a good choice come sale day. We should be keeping this son of Black Pearl however retain 25% semen interest only. This breeding bull is stout throughout his overall makeup and easy to recommend to anyone where you run commercial or registered cows.

- Krieger Farms



RP/MP Milestone A006

44 RP/MP Milestone A006

CE: 8 BW: 2.5 WW: 83 YW: 124 MCE: 9
 Milk: 18 MWW: 60 MRB: 0.05 REA: 0.47 API: 108



JF Milestone 999W

TNT Tp Gun R244

MS Maxie Lou M112S

EXAR Lutton 1831

MCLF RP Ms Love Me S311

NJC SVF Love Me Dont U

3/4 Blood

ASA# 2735013

BD: 1/5/13

Tattoo: A006

Adj. BW: 77

- A006 is a nice, stout bull that is a direct son of S311, the maternal grand-dam of the reigning Reserve National Champion Purebred Heifer. This powerful Milestone bull has the maternal power in his pedigree and excels in growth numbers as he is in the top 1% of the breed in weaning weight with an 83.3 and the top 4% of the breed in yearling weight with a 123.5.

- Rocking P Livestock

45

WLE The Specialist

CE: 9	BW: 0.8	WW: 56	YW: 68	MCE: 3
Milk: 21	MWW: 49	MRB: 0.22	REA: 0.83	API: 124



SS Ebonys Grandmaster

PVF-BF BF26 Black Joker

SOSF Ebonys Joy L-123

SS Goldmine L42

Shawnee Miss 770P

NLC LG770

Purebred

ASA# 2754654

BD: 1/29/13

Tattoo: A770

Adj. BW: 76

Adj. WW: 793

- Never before has a Shawnee Miss 770P son been offered for sale in a public auction setting; it's fair to say that this may be a once in a lifetime opportunity for prospective buyers to jump on the train. This bull's lineage speaks for itself. The list of successful siblings and their accolades is too long to write. I can get you started with the short list though, with names such as Twang, Swagger, Uno Mas, and Big Deal. 770P descendants have hung plenty of banners, but the true testament to this line of cattle has been shown where it counts: in the pasture and through successful semen sales. This bull is no let down to the family name. He has the same flawless skeleton, sweeping rib-cage, and endless functionality that have become common knowledge on the subject of this cow family. There is not a doubt in any of our minds that this bull has all of the makings of a truly influential, money-making breeding bull. Selling full- possession and 3/4 semen interest. Tested Homozygous Black and Polled.

• Wesner Livestock Ent



WLE The Specialist



Shawnee Miss 770P - reference dam

46

NB Tuffy 4A

CE: 6	BW: 1.6	WW: 50	YW: 67	MCE: 4
Milk: 30	MWW: 55	MRB: 0.12	REA: 0.48	API: 97



SVF NJC U003

NLC Fortunate Son 100N

NJC Ebony Antoinette

3C Picasso F955 BZ

NB Taffy 4N

4_

3/4 Blood

ASA# 2803156

BD: 2/1/13

Tattoo: 4A

Adj. BW: 82

Adj. WW: 681

- Another nice bull sired by U003! Square hipped, nice fronted, definite eye appeal. No Dream On. Semen tested.

• Neal Bros. Simmentals



SVF NJC U003 - reference sire

47

Heges Atomic

CE: 7	BW: 2.5	WW: 59	YW: 87	MCE: 11
Milk: 23	MWW: 53	MRB: 0.13	REA: 0.74	API: 109



K-LER Make It Rain

Foundation 724N

HCC/CSC Beyonce

HC Hummer 12M

WHF Tessa T024

WHF Black Jasmine 240J

Purebred

ASA# 2771511

BD: 2/7/13

Tattoo: A102

Adj. BW: 92

Adj. WW: 887

- What bull do you see alot of babies out of really hitting the sale rings around the country this year. Thats right Make it Rain so why not get a son and make your own. Out of Tessa the exciting donor from Hege Cattle Company and Wayward Hill Farm. This bull has the genetic package on both sides. Atomic carries a great deal of dimension while having that extra softness that really makes him a great breeding piece. If you are needing to power up cows in your herd we really believe this one is a no brainer.

• Hege Cattle Company



Heges Atomic



TNGL Wheel House A536

48 TNGL Wheel House A536

CE: 5 BW: 3.6 WW: 65 YW: 97 MCE: 9
 Milk: 17 MWW: 50 MRB: 0.06 REA: 0.63 API: 105



FBFS Wheel Man 649W

SVF Steel Force S701

SVF Star Sruck S199

DHF Jades Dreamworks

TNGL Glimmer X368

Bramlets Sparkle

Purebred ASA# 2752556 BD: 2/8/13

Tattoo: A536 Adj. BW: 88

- Wheel House A536 is one impressive individual. He is the definition of mass in a stylish package. A536 comes from one of the more prolific cow families that we have here on the farm, the Bramlets Sparkle family. He is the first calf of a Sparkle daughter, TNGL Glimmer X368, which we are expecting great things from. If you study his pedigree even harder he stems to the great RF Black Jade on the bottom side of his pedigree as well. Being a son of the past Denver champion, FBFS Wheel Man, adds even more depth to this young bulls future. No matter what sector of the cattle business you are in this bull will work. If you are adding pounds, making show heifers or steers, or selling commercial bulls, Wheel House is a one stop shop.

- Tingle Farms

49 Heges Alabama Slamma

CE: 12 BW: 1.9 WW: 72 YW: 105 MCE: 10
 Milk: 26 MWW: 62 MRB: 0.34 REA: 0.88 API: 141



MR NLC Upgrade U8676

Ellingson Legacy M229

Ms NLC Mojo S6119 B

STF Shocking Dream SJ14

STF Shimmering Lite U72K

STF Miss LJ25

Purebred ASA# 2771526 BD: 2/17/13

Tattoo: A105 Adj. BW: 89

- Another opportunity to get a great young son out of the great Shimmer donor of Hege Cattle Company's. Alabama is so appealing to the eye, balance, soundness, length of spine, extra rib, tied into a great front end makes this guy a great investment for your herd. Don't be afraid to let him cover your cows and have the same potential as those AI sires you are thinking about using. Won't need much in the tank with this one. Bid early bid often.

- Hege Cattle Company



Heges Alabama Slamma

STF Shimmering Lite U72K - reference dam



50A Pays to Dream Semen

CNS Dream On L186 x MLF BL Jessie K336

5 - 10 Units of Sex Heifer Semen

ASA# 2419371

50B
50C
50D
50E

- Pays to dream is a proven sire with all the guesswork removed. He continues to sire the kind of quality needed to succeed in the show ring and then continue that success from the pasture. PTD Progeny have been sale toppers year after year. He has a great disposition and passes that along to her offspring. This is great for the juniors yet his greatest success has been in the national open shows. Most recently, he sired the North American Champion bull, LLSF Pays to Believe. Combine his personality with the EPDs and it becomes obvious why this sire is so popular in the Simmental breed. Semen on PTD has never been widely campaigned as he was the lead Simmental herd sire by Eby and Krebs Ranches until fall 2013. This limited access created real value for those wide enough and fortunate enough to acquire his genetics. We will continue to maintain this value for those breeders that choose to invest in Pays To Dream. We will limit sexed semen to 200 units for the 2014 spring breeding season and it can only be acquired at very select events.

- Rustic Hills Cattle Co.



CNS Pays to Dream - reference sire

The Illinois Simmental Association, host of the 2014 AJSA Classic, is offering the following donation lots to benefit the 2014 AJSA Classic to be held in Louisville, KY:

D₁



Selling a ringside banner with farm/company logo on it.

• Put your farm, ranch, or business in the official 2014 AJSA Classic Portrait! This is a one of a kind art opportunity to be featured in a CJ Brown painting to commemorate the 2014 AJSA National Classic, held in conjunction with the Simmental Breeders Sweepstakes. CJ is painting a champion line-up of the Supreme Champion Drive at the Sweepstakes including the six division champion heifers, bulls and cows, as well as ringside sponsor banners and spectators. The 6 Champion spots have been sold. But a great opportunity to promote your farm or business remains. The Illinois Simmental Association is auctioning 1 of the 6 spots to put your farm, ranch, or business on a Ringside Banner in the official 2014 AJSA Classic Portrait. Buyers must supply their name and logo to be painted on the Ringside Banner by March 15th.

D₂



Spectator Spot #1

D₃



Spectator Spot #2

• In the same 2014 AJSA Classic Portrait, CJ Brown is going to paint several spectators around ringside viewing that Sweepstakes Supreme Champion Drive. What a perfect place for that special show person, parent, grandparent or other supporter of the breed and your family or operation to be represented! There will be a limited number of spectator spots painted in the portrait, so secure a spot to honor that special individual now. At the KY Beef Expo, the Illinois Simmental Association is auctioning 2 spectator spots in the official 2014 AJSA Classic Portrait. Buyers must supply a picture of the individual to be painted by March 15th.

In both cases, the buyers will receive a free print of the final painting. The original will be auctioned at the 2014 AJSA Classic. And all proceeds go toward the 2014 AJSA Classic!

DVAuction

Broadcasting Real-Time Auctions

Never Miss An Auction Again!
Watch & Bid online for FREE!

**Visit www.DVAuction.com
and Register Today!**

For General Questions Please Contact Our Office:
(402) 316-5460 or support@dvauction.com



Doug & Debbie Parke
 153 Bourbon Hills • Paris KY 40361
 (859) 987-5758 • (859) 987-0709 fax
 (859) 421-6100 mobile
 e-mail: pleent@aol.com

PRE-SORTED
 FIRST CLASS
 US Postage
PAID
 Permit No. 580
 Manhattan, KS

First Class

Time Dated Material



Simmental Show & Sale

