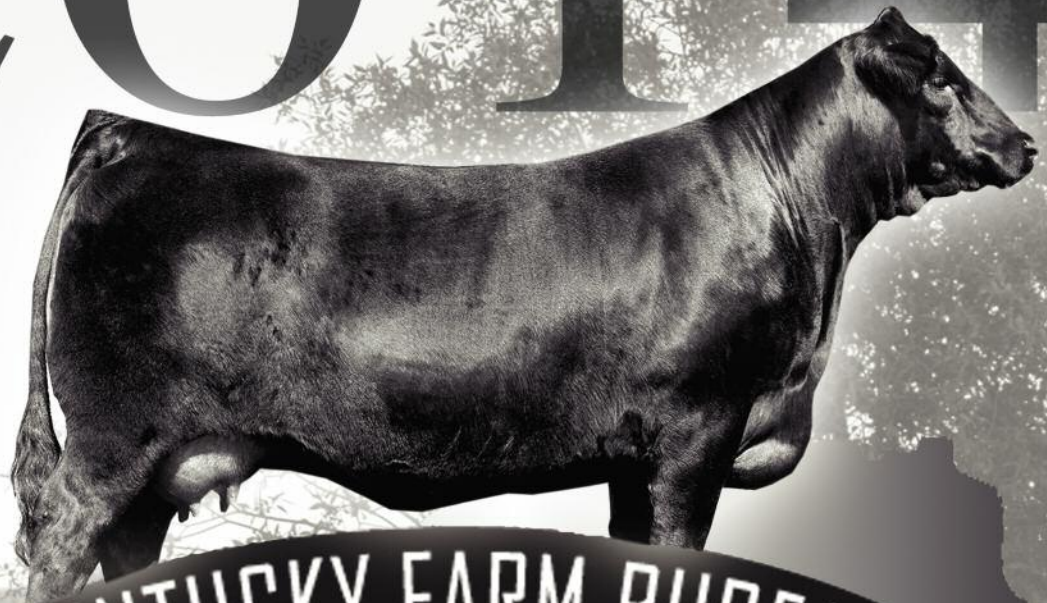


2014



KENTUCKY FARM BUREAU **BEEF EXPO**

Limousin Show & Sale

Saturday

March 1

3:30pm 2014

New Market Hall
Louisville, Kentucky



Sponsored by the
Kentucky Department of Agriculture



Kentucky Farm Bureau Federation

9201 Bunsen Parkway • P.O. Box 20700 • Louisville, KY 40250-0700
Telephone (502) 495-5000 • Fax (502) 495-5114 • kyfb.com

MARK HANEY
President
EDDIE MELTON
First Vice President
J. FRITZ GHESECKE
Second Vice President
DAVID S. BECK
Executive Vice President

Welcome to the 2014 Kentucky Farm Bureau Beef Expo and Limousin Show and Sale. We are very proud to serve as the corporate sponsor of the expo.

With nearly 500,000 members, Kentucky Farm Bureau is actively involved in ensuring that Kentucky agriculture remains a strong and vital element of our Commonwealth's economy.

Beef cattle are an integral part of Kentucky agriculture. We applaud the efforts of those who work so diligently to improve an industry already known for its excellence, through events such as the 2014 Kentucky Farm Bureau Beef Expo.

Considering ever-increasing consumer demand for high-quality and safe food, efforts to improve Kentucky's beef cattle industry are now more important than ever. The Expo offers you the latest industry news and information, along with the opportunity to obtain some of the best breeding stock in the United States.

Again we welcome you to the 2014 Kentucky Farm Bureau Beef Expo, and hope the many valuable resources available here will benefit both you and your cattle operation.

Sincerely,

Mark Haney
President

"Voice of Kentucky Agriculture"



James R. Comer
Commissioner



Kentucky
Department of
Agriculture

Phone: (502) 573-0450
Fax: (502) 573-0046
E-mail: james.comer@ky.gov

Dear friends,

Welcome to the 28th Annual Kentucky Farm Bureau Beef Expo at the Kentucky Exposition Center. The Kentucky Department of Agriculture and Kentucky Farm Bureau are proud to sponsor the premier beef cattle event in the Commonwealth of Kentucky.

With beef cattle, as with all livestock, greatness begins in the genes, and buyers can find the best genetics in the business at the Kentucky Farm Bureau Beef Expo. I'm a cattleman myself, and I understand the importance of a strong genetics base in building a successful herd.

Last year's Expo generated more than \$1 million in gross sales, rewarding efforts to make the Expo an appealing and useful event for the beef cattle industry. Numbers for all breeds and the pen heifer sale this year are expected to exceed 2013 levels.

Young exhibitors select project animals for the 2014 show circuit and take part in the junior show. Kentucky continues to increase its influence here; last year, 169 of the 500 entries in the junior show were Kentucky animals, an increase of 31 head from the previous year. The judging contest provides another opportunity for our youth to sharpen their skills.

As Commissioner of Agriculture, I am proud to be involved with this great program in the Kentucky Exposition Center, one of the finest exposition facilities in the nation with 1.2 million square feet of enclosed, climate-controlled exhibition space. Please let me or my staff know how we can help make this year's Kentucky Farm Bureau Beef Expo a great one for you.

Sincerely,

JAMES COMER
Commissioner of Agriculture
Commonwealth of Kentucky



www.kyagr.com





KENTUCKY BEEF EXPO

Limousin Show & Sale

Saturday **March 1** 3:30pm
2014

New Market Hall, Louisville, Kentucky

Sale Day Phones: 502-367-5472 or 817-821-6263 (Keith)

Schedule of Limousin Events:

Saturday, March 1, 2014

10:00 am Limousin Breed Show

3:30 pm Limousin Breed Sale

Sunday, March 2, 2014

8:00 am Jr. Heifer & Steer Show

Lodging:

- Holiday Inn Southwest

4110 Dixie Highway

Louisville, KY. 40216

Easy access from I264 Exit 8B/Free Parking

For reservations, call 502-448-2020 Hotel Contact: Cathy Rigdon

The EXPO Block cut-off date is 2/18/2014

Auctioneer:

Bruce Brooks

Judge:

Mike Meyers, Cynthiana, KY

Terms & Conditions:

Cattle sell under the standard sale terms and conditions of the North American Limousin Foundation

EPD Information

Please note that EPDs may change from the time the sale catalog is printed until registration papers are transferred.

Sale Management



**KK SEEDSTOCK CONSULTANTS
SPECIALIZED SALES**
2300 Monument Ave., Richmond, VA 23220
Keith Kissee • Cell: 817-821-6263
Ph: 804-353-2220 • Fax: 804-353-2221
email: kkseedstock@comcast.net
www.kkseedstock.com

Consignors:

ENGLEWOOD FARMS

John Tobe - Owner

761 Engleman Lane

Lancaster, KY 40444

John Ethington

(859) 533-1301

FAWLEY FARMS LIMOUSIN

Megan & Molly Greenawalt

3540 Anderson Rd.

Lynchburg, OH 45142

(937) 763-0931

GRANDVIEW FARMS

Tom and Chris Daniel

5171 Camargo-Levee RD

MT Sterling, KY 40353

(859) 585-1785

HB FARMS

Greg Blaydes

1938 W. Leestown Rd.

Midway, KY 40347

(859) 338-9402

MARJON FARMS

10146W 800 RD

Earl Park, IN 47942

(219) 474-3254

DVAuction
Broadcasting Real-Time Auctions

Watch and Bid online
for FREE!

Can't make the sale?
Let DVAuction bring the sale
to you!

Busy during the sale?
Let DVAuction represent
your bid!

Register Today

1. Create an account at www.dvauction.com under the "register" tab.
2. Apply for bidding by clicking the "details" tab at least 24 hours prior to the sale.
3. Tune in for the sale and make your purchases!

For general questions
please contact our office:
402-316-5460 or
support@dvauction.com

**High speed internet
access required*

2014 SHOW PROGRAM

FEMALES

PLACING	LOT #	NAME	DATE OF BIRTH	CONSIGNOR
	13	HB JENNA 350A	9/02/2013	HB FARMS
	12	GMLY JOY 328	6/12/2013	FAWLY FARMS
	11	BLEL PEG 333A	4/06/2013	WILL BLAYDES / ETHINGTON FARMS
	10	WLBI REBA RAMBO 306A	3/01/2013	WILL BLAYDES
	9	ENGD ANASTASIA 3010A	2/17/2013	ENGLEWOOD FARMS
	8	BC SHE'S A NUISANCE 111Z	11/21/2012	WILL BLAYDES
	7	ENGD 2165Z	10/28/2012	DREW SHRYOCK

CALF CHAMPION FEMALE _____

RES. CALF CHAMPION FEMALE _____

JUNIOR CHAMPION FEMALE _____

RES. JUNIOR CHAMPION FEMALE _____

SENIOR CHAMPION FEMALE _____

RES. SENIOR CHAMPION FEMALE _____

GRAND CHAMPION FEMALE _____

RES. GRAND CHAMPION FEMALE _____

BULLS

PLACING	LOT #	NAME	DATE OF BIRTH	CONSIGNOR
	6	MJ ACE OF SPADES 19A	4/03/2013	MARJON FARMS
	5	ENGD AVALANCHE 3017A	3/06/2013	ENGLEWOOD FARMS
	4	MJ ACE OF DIAMONDS 93A	2/24/2013	MARJON FARMS
	3	FWLY JOE DIRT	2/09/2013	FAWLEY FARMS
	2	MJ AMARILLO SKY 5A	2/09/2013	MARJON FARMS
	1	FWLY TRANQUILITY'S WIND	12/08/2012	FAWLEY FARMS

CALF CHAMPION BULL _____

RES. CALF CHAMPION BULL _____

JUNIOR CHAMPION BULL _____

RES. JUNIOR CHAMPION BULL _____

SENIOR CHAMPION BULL _____

RES. SENIOR CHAMPION BULL _____

GRAND CHAMPION BULL _____

RES. GRAND CHAMPION BULL _____

BEST THREE HEAD _____

PENS

PLACING	LOT #	NAME	DATE OF BIRTH	CONSIGNOR
	14	GVMS JOANIE 16Z	6/27/2012	GRANDVIEW FARMS
	15	GVMS STARLIGHT 132Y	7/28/2011	GRANDVIEW FARMS
	16	ENGD ZELDE 2005Z	2/20/2012	ENGLEWOOD FARMS
	17	ENGD ZARITA 2013Z	2/26/2012	ENGLEWOOD FARMS
	18	HB DELIGHTFULL 245Z	02/27/2012	HB FARMS
	19	HB DELIGHTFULL 243Z	08/25/2012	HB FARMS
	20	HB SCOTCH CAP 324A	3/21/2013	HB FARMS
	21	HB LUCY 318A	03/13/2013	HB FARMS

GRAND CHAMPION PEN _____

RES. CHAMPION PEN _____

LIMOUSIN

SHOW AND SALE

Sale Bulls



Fawley Farms

PERCENTAGE(88) • BULL • DOUBLE POLLED • HOMO BLACK

BW 75

FWLY Tranquility's Wind

WW 772

12/08/2012 • FWLY272Z • NXM2043590

YW 1209



KAJO RESPONDER 120R
AHCC WESTWIND W544
AHCC MISS WULF HUNT R544

JCL LODESTAR 27L
KAJO SHERYL SWOOPS 11H
COLE WULF HUNT
AHCC MISS OUTCROSS N844
LESF ASPHALT 9N
EXAR SCOTCH CAP 1548
AUTO DOLLAR GENERAL 122R
CARROUSELS PINA COLADA

EXLR RIGHT OF WAY 177R
TMCK TRANQUILITY 31W
MCBN TRANQUILLITY BROWN

CED	BW	WW	YW	MA	CEM	SC	ST	DOC	CW	RE	YG	MB	\$M
10	1.4	51	102	25	4	0.7		11	36	0.19	0.18	0.10	48

FWLY Tranquility's Wind is a powerful and impressive beef bull from the strong cow family that traces to Carrouseles Pina Colada. The balanced EPDS and pedigree depth of this young breeding bull makes an exceptional addition to this year's Kentucky Beef Expo. His dam is one of the top females in the breeding herd at Fawley Farms, and the breeding potential is phenomenal with this individual. This rugged herd sire is ready for heavy service soon after sale day.



1

FWLY Tranquility's Wind

Marjorie Farms

PUREBRED • BULL • HOMO POLLED • HOMO BLACK

BW 78

MJ Amarillo Sky 5A

WW 707

02/09/2013 • MJMB5A • NPM2041069

YW



AUTO BLACK DAKOTA 129J
EF MAIN STAY 541M
EXLR 231J

EXLR DAKOTA 353G
DFLC JET SET BPC 34Y
WULFS GUARDIAN 5074G
EXLR LUVLY 081F
BLACK DIAMOND
QUAIL RUN RAMONA BP
EXLR LIMITED EDITION 765J
AUTO CITY NIGHTS 214H

GPFF BLAQUE RULON
SBLX TRUE LOVE 918T
MAGS MANUELA

CED	BW	WW	YW	MA	CEM	SC	ST	DOC	CW	RE	YG	MB	\$M
8	1.7	42	79	27	5	0.1	19	19	-9	0.31	-0.06	-0.06	41

This is an EF Main Stay 541M son from SBLX True Love 918T, which is the 2012 Bronze Medal MOE dam of the year. MJ Amarillo Sky 5A is also a full brother to MJ Extravaganza, the two time Gold Medal purebred bull. MJ Amarillo Sky also won his division at the North American last fall and in Denver this past January. He is extremely stout and straight in his lines. This is a fantastic opportunity to own a purebred bull that is also homozygous polled and homozygous black.



2

MJ Amarillo Sky 5A

Fawley Farms

LIM-FLEX(75) • BULL • HOMO POLLED • BLACK

BW 90

FWLY Joe Dirt

WW 670

02/09/2013 • FWLY304A • LFM2037765

YW



MAGS REJUVENATOR
C L BURBANK
LH RADIANT 323R

GPFF BLAQUE RULON
TWIN EAGLES LADY 180K
JCL LODESTAR 27L
VERMILION LADY 1469
EXLR DAKOTA 353G
MAGS GLORIA
WULFS GUARDIAN 5074G
EXLR LUVLY 087F

MAGS KAPTAIN AMERICA
LESF JOYCE 5313R
AUTO JOYCE 218L

CED	BW	WW	YW	MA	CEM	SC	ST	DOC	CW	RE	YG	MB	\$M
9	2.2	56	98	18	3	0.4		8	44	0.42	0.18	0.10	49

FWLY Joe Dirt is the homozygous polled son of CL Burbank, the great breeding sire and championship winning Lim-Flex bull. Years of selective breeding is offered in the pedigree of this breeding bull prospect, and he represents the best available in the breed. The cow family that is represented here has worked well throughout North America, and many outstanding individuals are accomplished and proven. The February bull is a complete package that comes from the great breeding herd of Fawley Farms.



3

FWLY Joe Dirt



Ref MAGS Winston - Sire

Marjon Farms



LIM-FLEX(50) • BULL • DOUBLE POLLED • RED
MJ Ace of Diamonds 93A

02/24/2013 • MJMB93A • LFM2030617

BT CROSSOVER 758N
 MAGS WINSTON
 MAGS STRAWBERRY

G A R PREDESTINED
 MAGS YASMIN
 MAGS SEVENTEEN

C A FUTURE DIRECTION 5321
 BT ROYAL PRIDE 237G
 EXLR NEW GENERATION 071M
 MAGS FRUITFUL 487M
 B/R NEW DESIGN 036
 G A R EXT 4206
 GPF BLAQUE RULON
 MAGS MANDA

BW 75
 WW
 YW

CED	BW	WW	YW	MA	CEM	SC	ST	DOC	CW	RE	YG	MB	\$M
10	1.0	54	107	27	4	-0.1		12	41	-0.05	0.37	0.56	64

MJ Ace of Diamonds 9A is a thickly muscled and attractively constructed son of MAGS Winston. The yearling bull is from a productive daughter of GAR Predestined that traces back to the highly appreciated MAGS Manda cow family. The Lim-Flex herd sire is from the productive breeding herd of Marjon Limousin, and this lot is one of three outstanding bulls from the Blake family. He has the look and genetic profile to achieve greatness in the breeding pasture.



5 ENGD Avalanche 3017A

Englewood Farms



LIM-FLEX(50) • BULL • HOMO POLLED • HOMO BLACK
ENGD Avalanche 3017A

03/06/2013 • ENGD3017A • LFM2029976

TC ABERDEEN 759
 MAGS Y-AXIS
 MAGS UAHUKA

WULES UPGRADE 0500U
 ENGD BLACKCAP 1083Y
 TCF BLACKCAP W164

C R A BEXTOR 872 5205 608
 TC BLACKBIRD 4034
 DHVO DEUCE 132R
 CARROUSELS PINA COLADA
 JIWM DIRE STRAYTS 4109P
 WULES KYAH 0500K
 B/R 65R GENESIS
 RAB-GAR MS PRECISION 4002

BW 78
 WW 746
 YW

CED	BW	WW	YW	MA	CEM	SC	ST	DOC	CW	RE	YG	MB	\$M
8	0.4	52	103	31	3	0.6			29	0.32	0.16	0.16	50

ENGD Avalanche 3017A is homozygous polled and homozygous black. The son of MAGS Y-Axis has an impressive EPD spread and has one of the most impressive pedigrees available in the industry today. The Lim-Flex sire is a powerful individual and has all the necessary parts to be a leading breeding sire. His 31 milking ability makes him one to use for heifer retention. He combines the very best from the breeding herd at Englewood Farms.



6 MJ Ace of Spades 19A

Marjon Farms



LIM-FLEX(75) • BULL • POLLED • HOMO BLACK
MJ Ace of Spades 19A

04/03/2013 • MJMB19A • LFM2043316

SCHILLING'S TALLADEGA
 CALO BRICKYARD 902W
 EXG E839 1407 M175 LS

GPF BLAQUE RULON
 SBLX TRUE LOVE 918T
 MAGS MANUELA

KRVN NASKAR 013N
 RCSX RAINY DAY 80R
 BON VIEW NEW DESIGN 1407
 PAF 4019 6807 E839
 BLACK DIAMOND
 QUAIL RUN RAMONA BP
 EXLR LIMITED EDITION 765J
 AUTO CITY NIGHTS 214H

BW 98
 WW 693
 YW

CED	BW	WW	YW	MA	CEM	SC	ST	DOC	CW	RE	YG	MB	\$M
9	0.7	41	77	26	4	0.4		11	-2	0.06	0.07	0.10	45

This is an impressive Lim-Flex son from the great SBLX True Love 918T. The great female was the 2012 Bronze Medal MOE dam. She also is the dam of the Gold Medal bull and Bronze Medal bull for 2012 in the purebred division. This Lim-Flex mating is a can't miss opportunity. As an added bonus, MJ Ace of Spades is homozygous black. This is another one of the great individuals selling from the Blake family.

LIMOUSIN

SHOW AND SALE

Sale Females



Drew Shryock

LIM-FLEX(75) • FEMALE • HOMO POLLED • DOUBLE BLACK
ENG D 2165Z
 10/28/2012 • ENGD2165Z • LFF2016269

BW 78
WW
YW

S A V NET WORTH 4200
 WULFS X SIGN HERE X578X
 WULFS ROYALTY 5078R

S A V 8180 TRAVELER 004
 S A V MAY 2410
 HUNT MR JOCK 44J
 WULFS MARIAH 2074M
 EXLR POLLED RESOLVE 175G
 EXLR 199H
 EXLR NEW GENERATION 071M
 CV ORION'S LADY 8D

CED	BW	WW	YW	MA	CEM	SC	ST	DOC	CW	RE	YG	MB	\$M
5	2.4	42	91	29	4	0.4		18	27	0.05	0.16	0.11	46

AI 12-5-13 to MAGS Y-Axis
 PE 12-20-13 to 2-10-14 to X Factor

This exceptional Lim-Flex female is sired by the impressive Lim-flex sire, Wulfs X Sign Here X578X. She is from some of the top family lines in the industry, and she has a strong maternal pedigree. She is from a daughter of EXLR Excellante 251L that traces to some of the strongest of foundation genetics in the industry. Generations of proven genetics are represented within the pedigree as are several national champions. She is one of the top females in the offering from the Shryock family.



Ref Wulfs X Sign Here X578X

Will Blaydes

LIM-FLEX(50) • FEMALE • DOUBLE POLLED • HOMO BLACK
BC She's A Nuisance 111Z
 11/21/2012 • JKLD111Z • LFF2027847

BW 74
WW 764
YW

RGMA NIGHT RIDER 73N
 BC 50W
 ELMW PEACHES LF 50P

GPF BLAQUE RULON
 WULFS GIGGLE BOX 7030G
 CONNEALY LEAD ON
 ELMW POLLED LORI 31L
 C A FUTURE DIRECTION 5321
 H C C FOCUS BLACKBIRD1014
 T K STRATEGY N115
 ELMW NUISANCE P110N

CED	BW	WW	YW	MA	CEM	SC	ST	DOC	CW	RE	YG	MB	\$M
9	0.7	56	102	32	3	0.2							

AI 2-1-14 to MAGS Y-Axis
 PE 2-5-14 to 2-25-14 to WLBL Zorro 235Z

BC She's a Nuisance 111Z is one of the top females to ever sell through Kentucky Beef Expo. The exceptional Lim-Flex female has been an accomplished show heifer for Will Blaydes, and she will make a remarkable breeding female. She is steeped with the strongest of genetics available in the industry, and she is backed with problem-free genetics. Years of breeding has made this female a predictable genetic package. Few females in the industry has as much to offer as does BC She's a Nuisance 111Z.



8 BC She's A Nuisance 111Z

Englewood Farms

LIM-FLEX(50) • FEMALE • HOMO POLLED • HOMO BLACK
ENG D Anastasia 3010A
 02/17/2013 • ENGD3010A • LFF2030321

BW 65
WW 582
YW

TC ABERDEEN 759
 MAGS Y-AXIS
 MAGS UAHUKA

C R A BEXTOR 872 5205 608
 TC BLACKBIRD 4034
 DHVO DEUCE 132R
 CARROUSELS PINA COLADA
 B C LOOKOUT 7024
 B C PURE PRIDE ERICA D110
 LESF ASPHALT 9N
 VL PASSIONATE KISSES

CED	BW	WW	YW	MA	CEM	SC	ST	DOC	CW	RE	YG	MB	\$M
8	-0.3	45	95	27	1	0.2		15					

Open

ENG D Anastasia 3010A is a powerful yearling female that has a breed-leading pedigree and genetic derivation. Many of today's greats can be found in the pedigree of the February yearling heifer. For years, breeding individuals with the same genetics have had a part in the domination of greatness in the industry. The homozygous polled and homozygous black female is a combination of some of the absolute greatest. She will continue to be a competitive show heifer and productive cow for the future. This is one of the greatest generated in the Englewood program.



9 ENG D Anastasia 3010A



10 WLBL Reba Rambo 306A

Will Blaydes

LIM-FLEX(63) • FEMALE • DOUBLE POLLED • DOUBLE BLACK
WLBL Reba Rambo 306A
 03/01/2013 • WLBL306A • LFF2029395
 TC ABERDEEN 759
 MAGS Y-AXIS
 MAGS UAHUKA
 C R A BEXTOR 872 5205 608
 TC BLACKBIRD 4034
 DHVO DEUCE 132R
 CARROUSELS PINA COLADA
 KAJO RESPONDER 120R
 AHCC WESTWIND W544
 AHCC MISS WULF HUNT R544
 BR MIDLAND
 ANLC MANDY RAY 2141M
 TMCK REBA RAMBO 910Y
 BOHI REBA 258R

CED	BW	WW	YW	MA	CEM	SC	ST	DOC	CW	RE	YG	MB	\$M
8	1.2	53	107	23	2	0.5		18	44	0.32	0.24	0.21	52

Open

WLBL Reba Rambo 306A is an exceptional March heifer calf from the breeding herd of Will Blaydes. For many years, this line of females has paced the Limousin and Lim-Flex breeding industry. Some of the greatest of all the lines have become a part of the pedigree of this young female. The Reba cow family has become a part of many of the great herds in the industry. The daughter of MAGS Y-Axis has endless opportunities and potential. She has one of the top EPD profiles in the offering.



Ref Wulfs Well Suited X709 - Sire

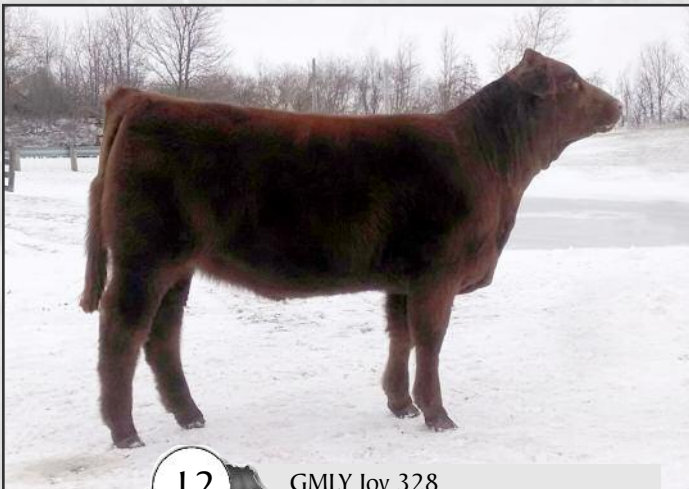
Will Blaydes & Ehington Farms

LIM-FLEX(38) • FEMALE • HOMO POLLED • DOUBLE BLACK
BLEL Peg 333A
 04/06/2013 • BLEL333A • LFF2037026
 WULFS RANSOM 3059R
 WULFS WELL SUITED W709
 CWS TOE THE LINE 709T
 WULFS NASA 1212N
 WULFS NOBILITY 3059N
 GLACIAL QUANTUM 3330 17K
 GFLI NADIA 331N
 O C C EMBLAZON 854E
 RITA 4L1 OF 2536 208
 BOYD NEW DAY 8005
 THREE TREES PEG 0655
 RITO 6EM3 OF 4L1 EMBLAZON
 HB PEG 111Y
 HB PEG 718T

CED	BW	WW	YW	MA	CEM	SC	ST	DOC	CW	RE	YG	MB	\$M
14	0.2	57	106	30	4			38	-0.30	0.54	0.34	55	

Open

BLEL Peg 333A is one of the top females in the offering. The daughter of Wulfs Well Suited W709 is from an excellent foundation Angus female. The Lim-Flex 50 female has tremendous potential as a show and breeding female. Exceptional spread of EPDS and breed-leading genetics is available through the blood of this young female. She is a combination female of the best of the Limousin and Angus breeds.



12 GMLY Joy 328

Fawley Farms

LIM-FLEX(75) • FEMALE • HOMO POLLED • RED
GMLY Joy 328
 06/12/2013 • GMLY328A • LFF2037771
 GPFF BLAQUE RULON
 FWLY BIG TIME
 CLLL BANANA CREAM PIE
 BLACK DIAMOND
 QUAIL RUN RAMONA BP
 WULFS DAWSON 4421D
 PLLP BETSY 2005B
 BON VIEW NEW DESIGN 878
 CHAMPION HILL ETTA 2951
 MAGS KAPTAIN AMERICA
 AUTO JOYCE 218L
 CBF IMPRESSIVE 5401
 TMCK JOYCE 88T
 LESF JOYCE 5313R

CED	BW	WW	YW	MA	CEM	SC	ST	DOC	CW	RE	YG	MB	\$M
8	2.1	46	83	21	1			23	0.34	0.10	0.03	44	

Open

GMLY Joy 328A is a daughter of the former Reserve Grand Champion Lim-Flex female of the National Junior Heifer show. She is a descendent from the Joyce family that has continually been a constant source of some of the greatest in the breed. The June heifer calf is a flashy heifer calf from the Fawley program, and she has all the parts to make a great one. The Fawley program has been represented at the Kentucky Beef Expo for many years, and they have a great group of genetics consigned this year.

LIMOUSIN

SHOW AND SALE

Sale Females



HB Farms

LIM-FLEX(50) • FEMALE • DOUBLE POLLED • DOUBLE BLACK

BW 65



HB Jenna 350A

09/02/2013 • BNLM350A • LFF2043808

WW

YW

TC ABERDEEN 759
MAGS Y-AXIS
MAGS UAHUKA

C R A BEXTOR 872 5205 608
TC BLACKBIRD 4034
DHVO DEUCE 132R
CARROUSELS PINA COLADA
S A F CONNECTION
SYDGEN FOREVER LADY 4087
EXLR POLLED RESOLVE 175G
EXLR 817F

SYDGEN C C & 7
HB JENNA 152Y
EXLR JENNA 777L

CED	BW	WW	YW	MA	CEM	SC	ST	DOC	CW	RE	YG	MB	\$M
9	-0.5	49	99	35	1			17	33	-0.08	0.38	0.34	54

Open

HB Jenna 350A is a young heifer calf from the HB breeding program. She represents some of the best in the industry from both the Limousin and Angus breeds. The Lim-Flex female has an extraordinary pedigree that has combined into an excellent genetic and phenotypic profile. Many of the most popular individuals in the breed trace to MAGS Y-Axis. The sky is the limit with this fancy prospect.



Morris

Ref

MAGS Y-Axis - Sire

Pens



Frank Stevens

Ref

TMCK Montgomery 875X - Service sire



Ref

ENGD Wild West 947W - Sire

Grandview Farms

PUREBRED • FEMALE • DOUBLE POLLED • DOUBLE BLACK

BW 80



GVMS Joanie 16Z

06/27/2012 • GVMS16Z • NPF2023877

WW

YW

WULFS SHOP TALK 2332S
GVMS BLACK DIAMOND 125W
GVMS GRACIE

CARROUSELS PURE POWER
WULFS MYRLENE 2332M
JCL LODSTAR 27L
GUYS NOVA
WULFS GAGE 5158G
WULFS GIN GIN 7522G
WLCC DOLLAR BILL
PLLP KLASNY 431W

WULFS KEYSTONE 7522K
GVMS MADDIE
BRJL KLASNY KENTUCKY BABE

CED	BW	WW	YW	MA	CEM	SC	ST	DOC	CW	RE	YG	MB	\$M
9	2.6	45	83	23	3								

AI 11-21-13 to TMCK Montgomery 875X

PE 11-28-13 to 1-5-14 to GVMS Mr. General

This purebred female is from some of the top bloodlines available in the Grand View breeding herd. She is from some of the top genetics in the industry, and she is from many generations of polled and black lines. Both sire and dam are dependable sources of some of the best in the industry. The Grand View herd has been built around great seedstock that is represented with young bred heifer.

Grandview Farms

PUREBRED • FEMALE • DOUBLE POLLED • DOUBLE BLACK

BW 77



GVMS Starlight 132Y

07/28/2011 • GVMS132Y • NPF2035410

WW

YW

WULFS SIRLOIN 3172S
ENGD WILD WEST 947W
WULFS TEANNA 7491T

COLE WULF HUNT
WULFS NEGOTIABLE 3172N
COLE WULF HUNT
WULFS JOY BELLS 9202J
COLE WULF HUNT
STKO ENDEVOR 9184J
DJ GENTLEMAN IN BLACK
HAWKS LIMITED EDITION

WBBK WARRIOR 3015N
GVMS RAGS TO RICHES
HAWKS TOUCH OF GRACE 753P

CED	BW	WW	YW	MA	CEM	SC	ST	DOC	CW	RE	YG	MB	\$M
10	1.4	49	92	27	5								

PE 28-13 to 7-28-13 to GVMS Mr. General

GVMS Starlight 132Y is sired by ENGD Wild West 947W, the senior herd sire at Grand View Farms. Her dam is one of the prolific breeding females in the program and this is a total package female. Nicely balanced EPDS make this heifer a great replacement female for any breeder. The purebred female has years of selective breeding backing up the lineage of the heifer.



LIMOUSIN SHOW AND SALE 2014

Pens

Englewood Farms

PUREBRED • FEMALE • DOUBLE POLLED • DOUBLE BLACK **BW 62**

16 **ENGD Zelde 2005Z** **WW 62**
 02/20/2012 • ENGD2005Z • NPF2003256 **YW 62**

WULFS RANSOM 3059R
 WULFS WELL SUITED W709
 CWS TOE THE LINE 709T

WULFS NASHA 1212N
 WULFS NOBILITY 3059N
 GLACIAL QUANTUM 3330 17K
 GFLI NADIA 331N
 KRNV NASKAR 013N
 JONK POLL UNDERWRITER
 JONK POLLED X-FACTOR 10X
 JONK BLK INK BLACK PEARL

CED	BW	WW	YW	MA	CEM	SC	ST	DOC	CW	RE	YG	MB	\$M
12	-1.0	42	81	22	2	0.4							

AI 5-15-13 to MAGS Y-Axis
 PE 6-10-13 to 9-5-13 to MAGS Y-Axis

ENGD Zelde 2005Z is a productive daughter of Wulfs Well Suited from the Englewood program. The two year old female is from the heart of the herd with exceptional genetic background lines. She is from one of the greatest of all the foundation cow families and traces back to LKCC Smith Cattle 418A. This is a top breeding female from the Englewood program, and one of the greatest supporters of the Kentucky Limousin Breeders Association.

Englewood Farms

PUREBRED • FEMALE • DOUBLE POLLED • RED **BW 68**

17 **ENGD Zarita 2013Z** **WW 68**
 02/26/2012 • ENGD2013Z • NPF2002790 **YW 68**

WULFS RANSOM 3059R
 WULFS WELL SUITED W709
 WS TOE THE LINE 709T

WULFS NASHA 1212N
 WULFS NOBILITY 3059N
 GLACIAL QUANTUM 3330 17K
 GFLI NADIA 331N
 DENISON POLLED PUB
 BEMS MISS MEDALIST
 HARVEST OLYMPUS
 TEXS STAR GOLLY

CED	BW	WW	YW	MA	CEM	SC	ST	DOC	CW	RE	YG	MB	\$M
10	0.7	47	80	27	1	0.1		26	33	0.57	-0.01	0.01	44

AI 5-15-13 to ENGD Zipline
 PE 6-10-13 to 9-5-14 to MAGS Y-Axis

ENGD Zarita 2013Z is one of the good bred females in the replacement pen at Englewood Farms. She is from a strong polled fullblood female that gives added muscle dimension to the replacement female. This is a strong maternal pedigree for the most dedicated Limousin breeders. She is from the immortal Laura's Accent foundation Limousin donor female that has made a dynamic impact on the genetic fabric of the breed.

HB Farms

LIM-FLEX(50) • FEMALE • DOUBLE POLLED • DOUBLE BLACK **BW 55**

18 **HB Delightfull 245Z** **WW 515**
 08/25/2012 • HBBH245Z • LFF2021283 **YW 821**

S A F FOCUS OF E R
 MYTTY IN FOCUS
 MYTTY COUNTESS 906

S A F FAME
 G D A R FOREVER LADY 246
 SITZ ALLIANCE 6595
 BALDRIDGE COUNTESS 357
 COLE FIRST DOWN 46D
 CHAZ FIRST CHOICE 6004F
 TWCC DELIGHTFULL 856H
 SCF POLLED DELIGHT 862X

CED	BW	WW	YW	MA	CEM	SC	ST	DOC	CW	RE	YG	MB	\$M
11	-0.7	52	98	33	5	0.6	13	20	30	-0.24	0.44	0.35	55

HB Farms

LIM-FLEX(50) • FEMALE • DOUBLE POLLED • DOUBLE BLACK **BW 60**

19 **HB Delightfull 243Z** **WW 493**
 08/25/2012 • HBBH243Z • LFF2022346 **YW 826**

S A F FOCUS OF E R
 MYTTY IN FOCUS
 MYTTY COUNTESS 906

S A F FAME
 G D A R FOREVER LADY 246
 SITZ ALLIANCE 6595
 BALDRIDGE COUNTESS 357
 COLE FIRST DOWN 46D
 CHAZ FIRST CHOICE 6004F
 TWCC DELIGHTFULL 856H
 SCF POLLED DELIGHT 862X

CED	BW	WW	YW	MA	CEM	SC	ST	DOC	CW	RE	YG	MB	\$M
11	-0.7	52	98	33	5	0.6	13	20	30	-0.24	0.44	0.35	55

These two twin females are sired by the foundation Angus sire, MYTTY In Focus. The Lim-Flex females are of exceptional quality and breed improvement. Their dam is one of the great foundation Limousin females in the HB program. The females have tremendous potential as breeding females to enhance a breeding program with proven and desirable genetics. The females are from the HB program, long time supporters of the Kentucky Beef Expo.

HB Farms

PERCENTAGE(85) • FEMALE • DOUBLE POLLED • DOUBLE BLACK **BW 75**

20 **HB Soctch Cap 324A** **WW 584**
 03/21/2013 • WLBI324A • NXF2027535 **YW 584**

AUTO DOLLAR GENERAL 122R
 ENGD DOLLAR GENERAL 902W
 COLE MISS BLUEPRINT 767T

IVLS SECRET WEAPON 4408K
 AUTO KYRIA 232K
 TNUH BLUE PRINT 245H
 COLE 33R
 CARROUSELS PURE POWER
 EXLR EILEEN 026P
 RADS BLACK PRODIGY
 EXAR SCOTCH CAP 1548

CED	BW	WW	YW	MA	CEM	SC	ST	DOC	CW	RE	YG	MB	\$M
8	1.9	47	87	32	5	0.5			38	0.35	0.18	0.16	48

Open

This female has a 32 milking ability EPD. She is one of the strongest maternal EPDS in the offering. She is from one of the good producing females in the HB program, and the March heifer will be ready for breeding soon after the Expo sale. Some of the top lines in the entire industry are present in the pedigree of this top yearling heifer. Exceptional quality is offered here.

HB Farms

PUREBRED • FEMALE • DOUBLE POLLED • DOUBLE BLACK **BW 78**

21 **HB Lucy 318A** **WW 628**
 03/13/2013 • HBBH318A • NPF2027545 **YW 628**

AUTO DOLLAR GENERAL 122R
 ENGD DOLLAR GENERAL 902W
 COLE MISS BLUEPRINT 767T

WULFS NASHA 1212N
 HB LUCY 803U
 HBBH LUCY 606S

IVLS SECRET WEAPON 4408K
 AUTO KYRIA 232K
 TNUH BLUE PRINT 245H
 COLE 33R
 WULFS FANFARE 4055F
 MISS WULFETTE 1212L
 AUTO CAPT SPRINGFIELD351P
 HBBH LUCY 305M

CED	BW	WW	YW	MA	CEM	SC	ST	DOC	CW	RE	YG	MB	\$M
8	2.2	53	93	34	7	0.7		19	28	0.35	0.07	0.09	49

Open

This is a paternal sister to lot 18. She and her half sister make an excellent pen of females from the HB program. Exceptional genetics are available through this pedigree. Other progeny sired by this sire have been well received at auction. A 34 maternal EPD make this an exceptional lot for the Kentucky Beef Expo.

LIMOUSIN

SHOW AND SALE

Embryos



Englewood Farms



HOMO POLLED • HOMO BLACK • LIM-FLEX

3 Embryos

TC ABERDEEN 759
MAGS Y-AXIS
MAGS UAHUKA

BLACKJACKS MIDLAND 3017
MLFK 33R
BLACKJACKS MIDLAND 3017

C R A BEXTOR 872 5205 608
TC BLACKBIRD 4034
DHVO DEUCE 132R
CARROUSELS PINA COLADA
BR MIDLAND
BLACKJACKS QUEEN 1016
COLE FIRST DOWN 46D
GAR 6807 TRAVELER 902

CED	BW	WW	YW	MA	CEM	SC	ST	DOC	CW	RE	YG	MB	\$M
11	-2.1	41	87	29	3	0.4		16					



Ref MLFK 33R - Dam

Englewood Farms



HOMO POLLED • HOMO BLACK • LIM-FLEX

3 Embryos

GPF BLAQUE RULON
DHVO DEUCE 132R
AMY JO DHAN 20L

BON VIEW NEW DESIGN 1407
SANDPOINT BLACKBIRD 5363
WK BLACKBIRD 9045

BLACK DIAMOND
BT ROYAL PRIDE 237G
BLACK CAT DHAN 152G
GPF AMBER JO
B/R NEW DESIGN 036
BON VIEW PRIDE 664
G A R PRECISION 1680
WK BLACKBIRD 7348

CED	BW	WW	YW	MA	CEM	SC	ST	DOC	CW	RE	YG	MB	\$M
7	2.2	50	94	25	3	0.8							



Ref Sandpoint Blackbird 5363



Major Co-Sponsors:
Kentucky Farm Bureau,
Farm Credit Mid-America,
Merial,
Kentucky Cattleman's Association
and
The Kentucky Department of
Agriculture,
James R. Comer, Commissioner



DVAuction

Broadcasting Real-Time Auctions

Never Miss An Auction Again!
Watch & Bid online for FREE!

**Visit www.DVAuction.com
and Register Today!**

For General Questions Please Contact Our Office:
(402) 316-5460 or support@dvauction.com

KEITH KISSEE



KK SEEDSTOCK CONSULTANTS SPECIALIZED SALES

2300 Monument Ave., Richmond, VA 23220
Keith Kisse • Cell: 817-821-6263
Ph: 804-353-2220 • Fax: 804-353-2221
email: kkseedstock@comcast.net

First Class
Presorted
U.S. Postage Paid
Fort Worth, Texas
Permit #356

2014 Kentucky Farm Bureau Beef Expo Schedule

ANGUS – Friday, Feb.28th, 10:00 a.m.	Saturday, March 1st , 12:00 noon
BEEFALO – Friday, Feb.28th, 2:30 p.m.	Saturday, March 1st , 9:30 a.m.
CHAROLAIS – Saturday, March 1st, 12:00 noon	Saturday, March 1st , 4:00 p.m.
GELBVIEH – Friday, Feb.28th, 1:00 p.m.	Saturday, March 1st , 11:30 a.m.
LIMOUSIN – Saturday, March 1st, 10:00 a.m.	Saturday, March 1st , 3:30 p.m.
HEREFORD – Friday, Feb.28th, 1:00 p.m.	Saturday, March 1st , 1:00 p.m.
RED ANGUS – Friday, Feb.28th , 10:00 a.m.	Saturday, March 1st , 10:00 a.m.
RED POLL – Friday, Feb. 28th, 4:00 p.m.	Saturday, March 1st , 9:30 a.m.
SHORTHORN – Saturday, March 1st, 10:00 a.m.	Saturday, March 1st , 1:00 p.m.
SIMMENTAL – Friday, Feb. 28th, 4:00 p.m.	Saturday, March 1st , 11:00 a.m.
PEN HEIFER – Friday, Feb.28th, 2:00 p.m.	Saturday, March 1st , 2:00 p.m.

Don't Miss These Other Expo Events!!!!

Junior Heifer, Steer, and Market Heifer Jackpot Shows
Trade Show and Youth Judging Contest

Additional information: www.kybeefexpo.com